

**CRUISE  
HOME SERIES**



**SKYSAIL**



**NEAL**COMMUNITIES  
Where You Live Matters



# CRUISE HOME SERIES



SKYSAIL



## LEGEND

- Coral Series
- Cruise Series
- Celebration Series
- Cove Series
- Coastal Series
- Townhomes
- Linear Park



**NEAL**COMMUNITIES

Where You Live Matters



©2025 Neal Communities, Lakewood Ranch, Florida. All rights reserved. Neal Communities reserves the right to change elevations, and specifications without notice. All renderings and maps are an artist's conception, and are not intended to be an actual depiction of the buildings, fencing, walks, driveways or landscaping. All dimensions have been calculated from architectural drawings and may be subject to minor variations during construction. Product selections can change at any time due to availability in the current marketplace. This brochure is for informational purposes only, and should not be the sole basis of a decision to purchase any property. Please see our sales representatives with any questions. We do business in accordance with the Federal Fair Housing Law. CBC 1256375. (08.14.25)

## CRUISE SERIES FEATURES



### SKYSAIL

#### SOUTHWEST FLORIDA'S MOST EXPERIENCED BUILDER

- Over 50 years of building award-winning homes
- Over 100 successful communities
- Over 24,500 homes built
- Dedicated customer care team
- Personalized Neal Design Gallery selection session
- 10-year full structural warranty
- 1, 6 and 11 month warranty service inspections available
- 2-year mechanical warranty
- Highest customer care satisfaction rating

#### NEIGHBORHOOD FEATURES

- 246 acres of lakes offering beautiful waterfront views
- 2 dog parks, 3 community event lawns, a lakehouse and a wellness center
- 3-mile perimeter trail
- Resort-style pool, lap pool and a spa
- A fishing pier, 8 pickleball and 2 tennis courts plus an outdoor gaming area with ping-pong and checker tables
- Easy access to Paradise Coast Sports Complex, a premier sports and special events venue

#### AWARD-WINNING DESIGN FEATURES

- Choice of custom-designed Tuscan, Northern Italian, Coastal, and Island elevations
- Decorative architectural details and shutters per plan
- Designer-selected exterior color palettes
- Professionally designed landscape package
- Professional in-house design service
- Neal Design Gallery offers choices for personalization of your home
- Exterior textured wall finish with siding OR banding and accents per plan
- The proven quality, service, and integrity of Neal Communities

#### LUXURY FEATURES

- Textured finish on walls and ceiling
- Classic colonial moldings
- 3-1/4" colonial baseboards
- Colonial windows (in select locations)
- Decorative coach lights
- Solid Surface window sills per plan
- Stylish lever door hardware
- Classic 2-panel interior doors
- Gutters included on sides per plan
- Professionally landscaped home site including mulch and automatic irrigation system
- Spacious closets with ventilated shelving (per plan)
- Plush, stain-resistant wall-to-wall carpeting in designer colors in areas per plan
- Long-lasting 17" ceramic tile floors in foyer, kitchen, baths and utility
- Air-conditioned laundry area with washer/dryer connections
- Painted garage floor
- Paver entry, walk, drive and lanai

#### QUALITY KITCHEN FEATURES

- General Electric stainless steel appliance package:
  - 5-year General Electric warranty
  - Over-the-range microwave
  - Refrigerator
  - Gas range
  - Dishwasher
- Moen 1/2 HP disposal
- 42" upper recessed panel wood veneer cabinets with stylish hardware
- Cabinet crown molding and bumped cabinet at microwave/hood
- Granite countertops - choice of value colors
- Stainless steel undermount sink
- Chrome single-handle faucet
- Spacious pantry for additional storage per plan



## CRUISE SERIES FEATURES



### SKYSAIL

#### LUXURY BATH FEATURES

- Corian white countertops with integral sinks and eased edge in baths
- Ceramic tile walls and glass shower enclosure in master bath per plan
- Elongated white water closet
- Recessed panel wood veneer cabinets with stylish hardware (Timberlake)
- Privacy water closet in master bath per plan
- Full-width vanity mirrors
- Chrome single lever faucets
- Water resistant drywall in all wet areas
- Towel bars and paper holders per plan
- Designer vanity lights
- White tub in guest bath
- Outside vented exhaust fans in all baths

#### QUALITY CONSTRUCTION FEATURES

- Professionally-engineered structural components
- Concrete block construction (first floor only)
- Maintenance-free soffit and fascia
- Two conveniently located exterior hose bibs
- Steel storm panels per plan
- PEX water lines throughout
- Roof with concrete roof tiles
- Five-year exterior paint warranty
- Raised-panel overhead garage door with operator and remote controls, style per elevation

#### ENERGY SAVING FEATURES

- Insulated Low-E double glazed windows and sliding glass doors
- Natural gas piping per plan
- R-38 ceiling insulation
- Premium fiberglass insulated entry door with weather stripping
- Energy-efficient air conditioning system (SEER rating varies per plan)
- Insulated heating and cooling ductwork
- All air conditioning ductwork 3rd party tested by a Class 1 Energy Rater - certified to be substantially leak free
- 50 gallon gas or electric water heater per plan
- Energy efficient lighting per plan

#### QUALITY ELECTRIC FEATURES

- Decora light switches throughout
- Decorator light fixture in foyer
- All copper wiring from panel box
- Hardwired smoke detectors with battery backup
- Prewired for ceiling fans - choice of three locations
- Arc prevention circuits in bedrooms
- GFI safety outlets in all wet areas
- GFI exterior outlets per plan



#### SMART HOME PACKAGE

- Smart thermostat with Z-wave technology
- Smart entry door deadbolt with Z-wave technology
- Connected HD video doorbell
- Smart hub to connect Z-wave devices
- Structured wiring system to include five (5) Cat 5 phone/data outlets (choice of locations)
- One wireless access point prewire

4056 SkySail Drive, Naples, FL 34120 | 239.990.2125 | SkySailFL.com



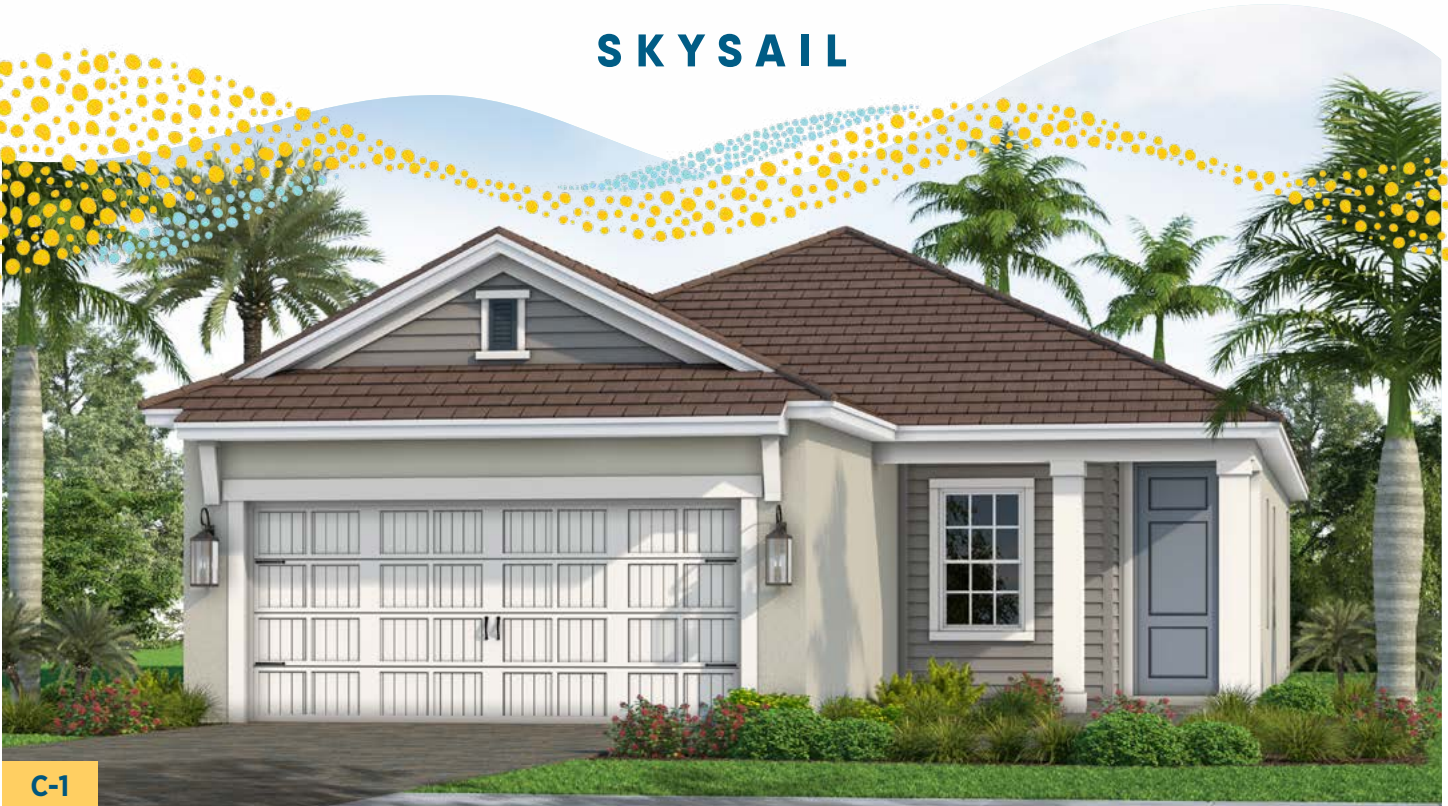
©2025 Neal Communities, Lakewood Ranch, Florida. All rights reserved. Neal Communities reserves the right to make changes to this information at anytime without notice. Product selections can change at any time due to availability in the current marketplace. This document supercedes previously published Included Features. Please see our sales representatives with any questions. We do business in accordance with the Federal Fair Housing Law. CBC 1256375 (02.13.25)



**CRUISE  
HOME SERIES**



**SKYSAIL**

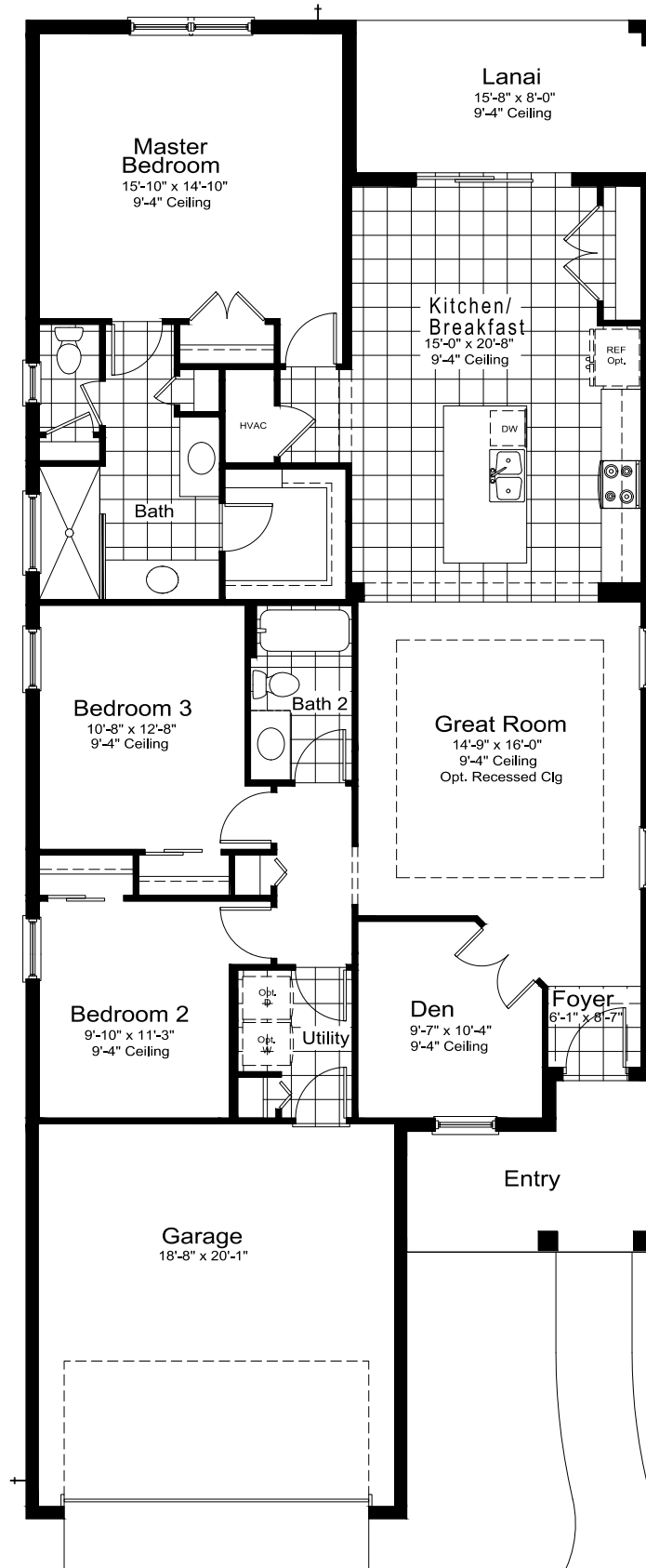
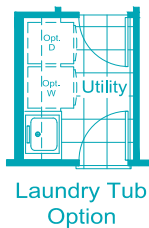
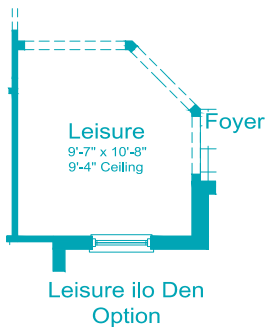


**IMAGINATION 2**

1,778 Sq Ft  
1 Story  
3 Beds  
2 Baths  
Den  
2-Car Garage

3 Bedrooms, 2 Baths, Den,  
2-Car Garage

Living Area 1,778 Sq. Ft.  
Garage 415 Sq. Ft.  
Lanai 125 Sq. Ft.  
Entry 96 Sq. Ft.  
Total Area 2,414 Sq. Ft.





**CRUISE  
HOME SERIES**



**SKYSAIL**

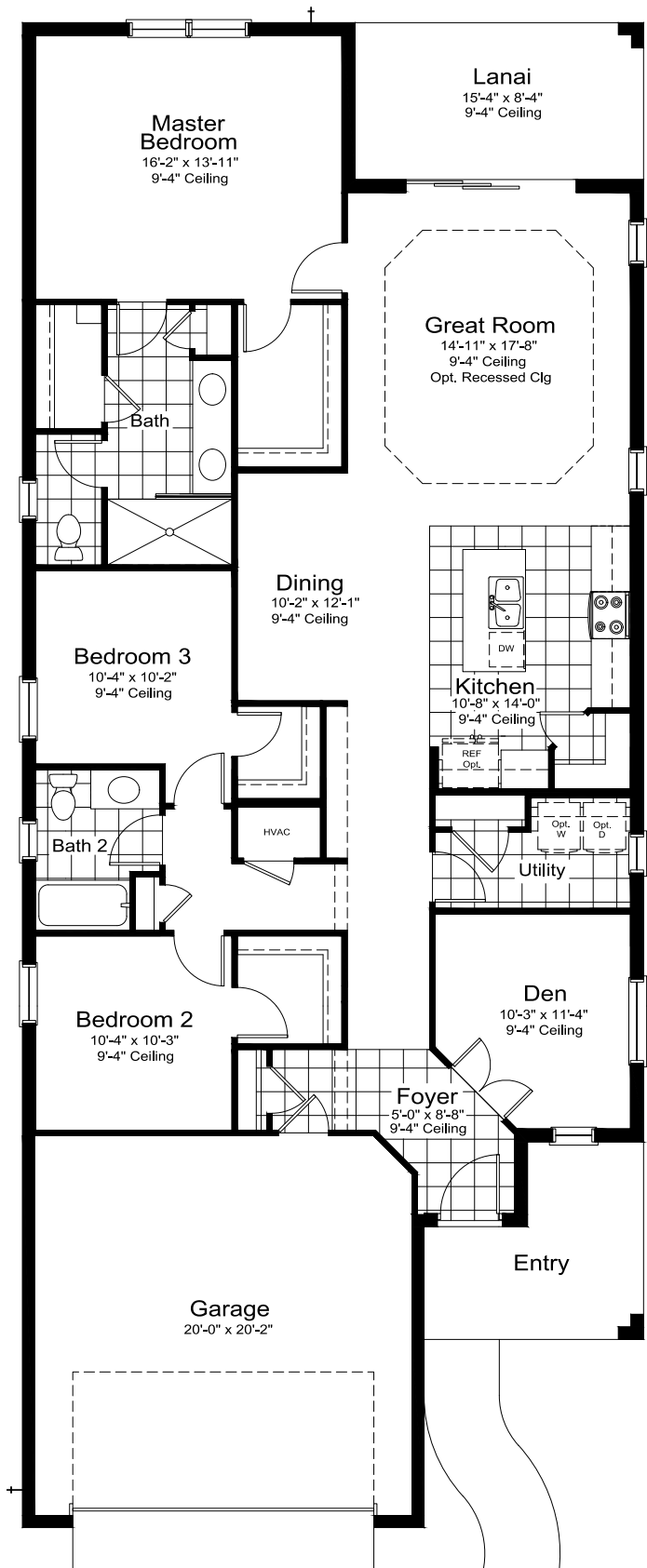


**DREAM 2**

1,860 Sq Ft  
1 Story  
3 Beds  
2 Baths  
Den  
2-Car Garage

3 Bedrooms, 2 Baths, Den, 2-Car Garage

Living Area	1,860 Sq. Ft.
Garage	438 Sq. Ft.
Lanai	128 Sq. Ft.
Entry	98 Sq. Ft.
Total Area	2,524 Sq. Ft.





**CRUISE  
HOME SERIES**



**SKYSAIL**



**NI-1**



**I-2**



**C-1**

**HERITAGE 2**

2,429 Sq Ft

2 Story

4 Beds

2.5 Baths

2-Car Garage

4 Bedrooms, 2.5 Baths, 2-Car Garage

Living Area

2,429 Sq. Ft.

Garage

423 Sq. Ft.

Lanai

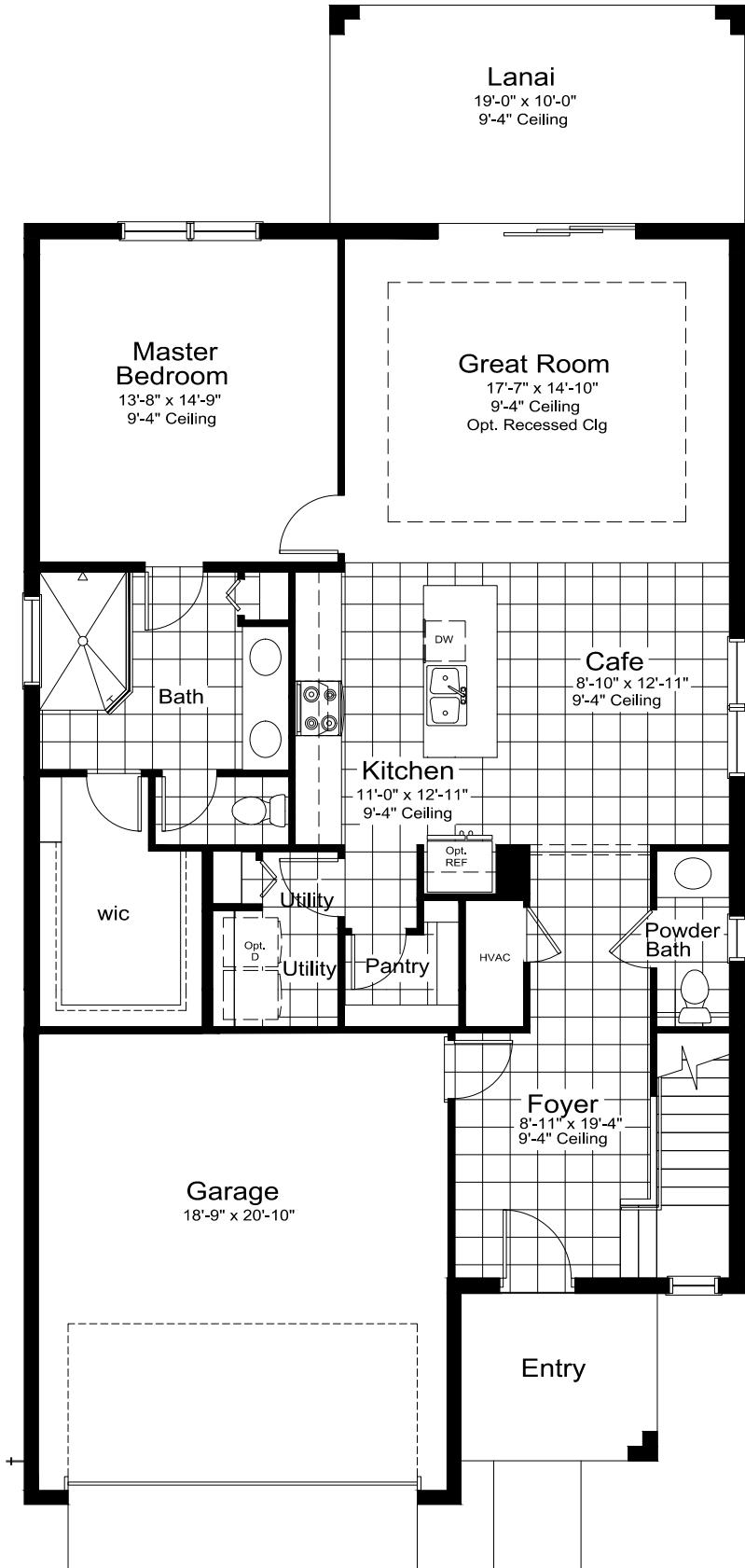
190 Sq. Ft.

Entry

70 Sq. Ft.

Total Area

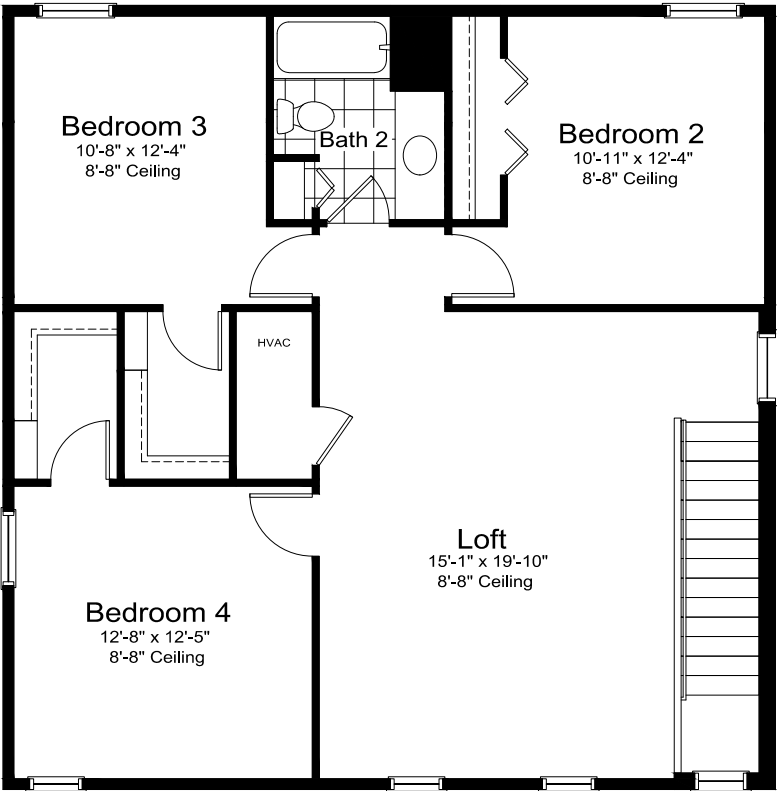
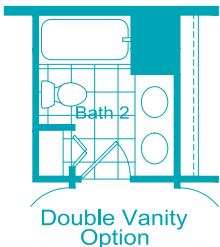
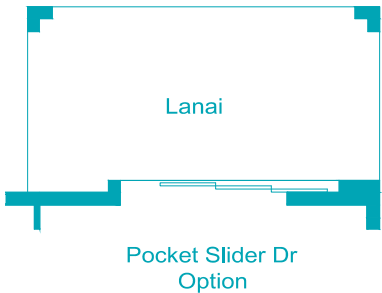
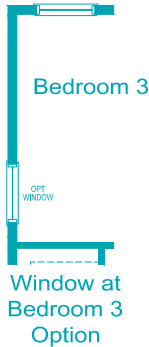
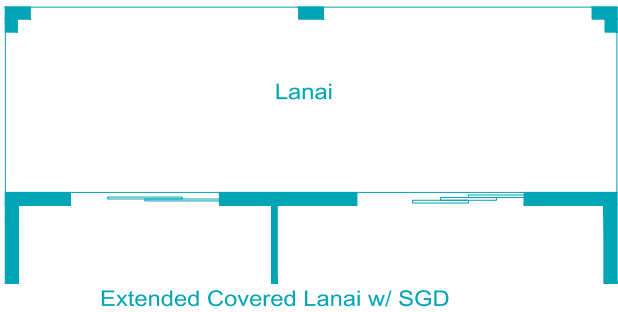
3,112 Sq. Ft.





4 Bedrooms, 2.5 Baths, 2-Car Garage

Living Area	2,429 Sq. Ft.
Garage	423 Sq. Ft.
Lanai	190 Sq. Ft.
Entry	70 Sq. Ft.
Total Area	3,112 Sq. Ft.



Upper Floor  
ALL ELEVATIONS