





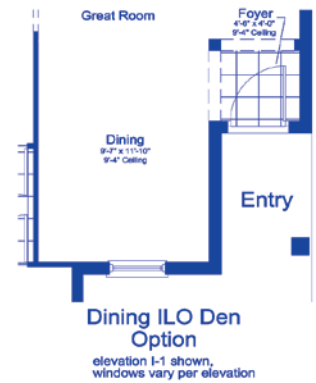
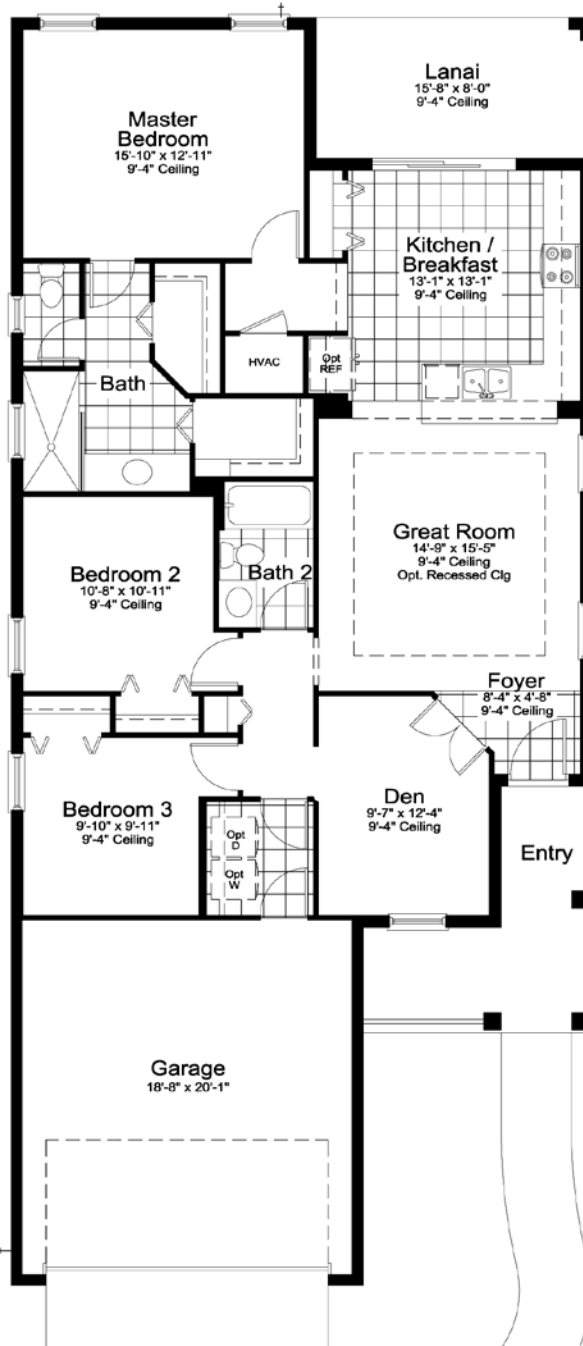
I-1



I-2



C-1



ELEVATION I-2

Living	1531 SF
Garage	414 SF
Lanai	125 SF
Entry	119 SF
<b>TOTAL</b>	<b>2189 SF</b>

\*Site conditions may vary. Please see sales representative for details regarding elevations and plan variations



I-1



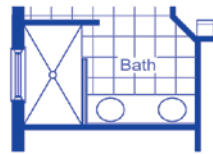
I-2



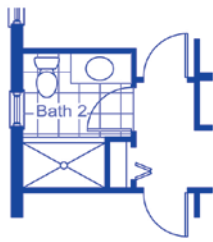
C-1



Master Bath Door Option



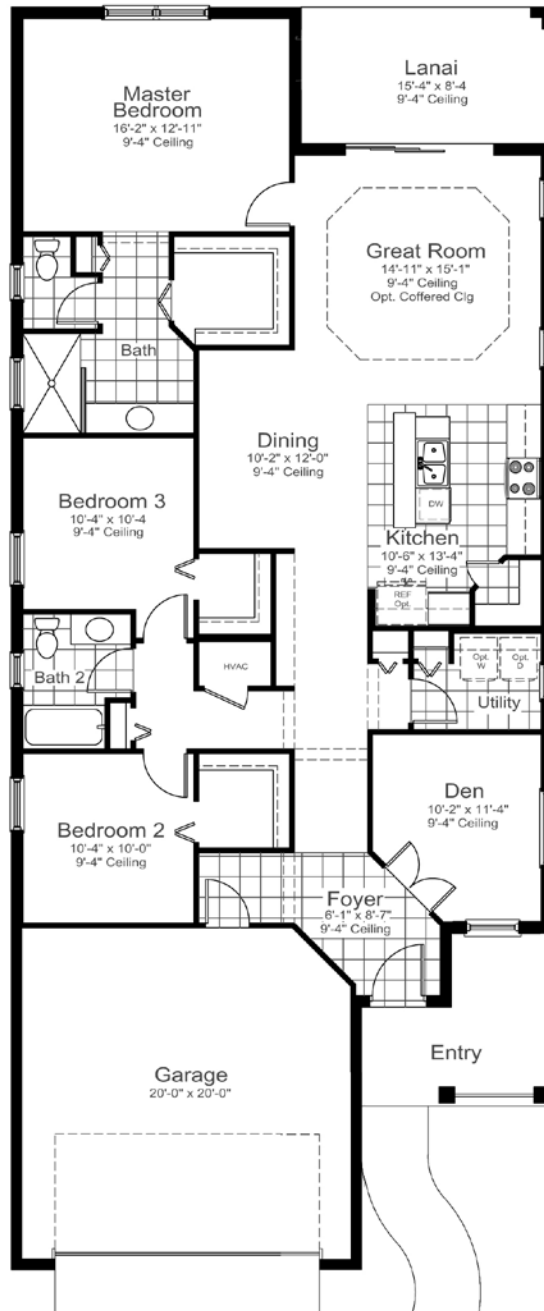
Master Bath Double Sink Option



Bath 2 Shower Option

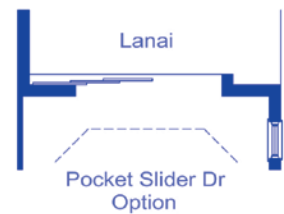
ELEVATION I-2

Living	1764 SF
Garage	435 SF
Lanai	128 SF
Entry	98 SF
<b>TOTAL</b>	<b>2425 SF</b>



Lanai

Outdoor Kitchen Wall Option



Lanai

Pocket Slider Dr Option



Low Bar Option



Laundry Tub Option

\*Site conditions may vary. Please see sales representative for details regarding elevations and plan variations



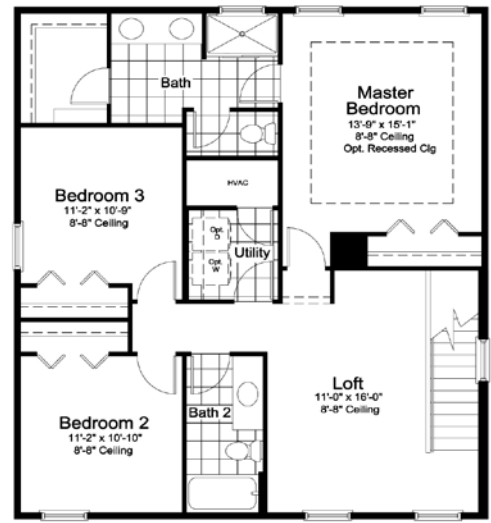
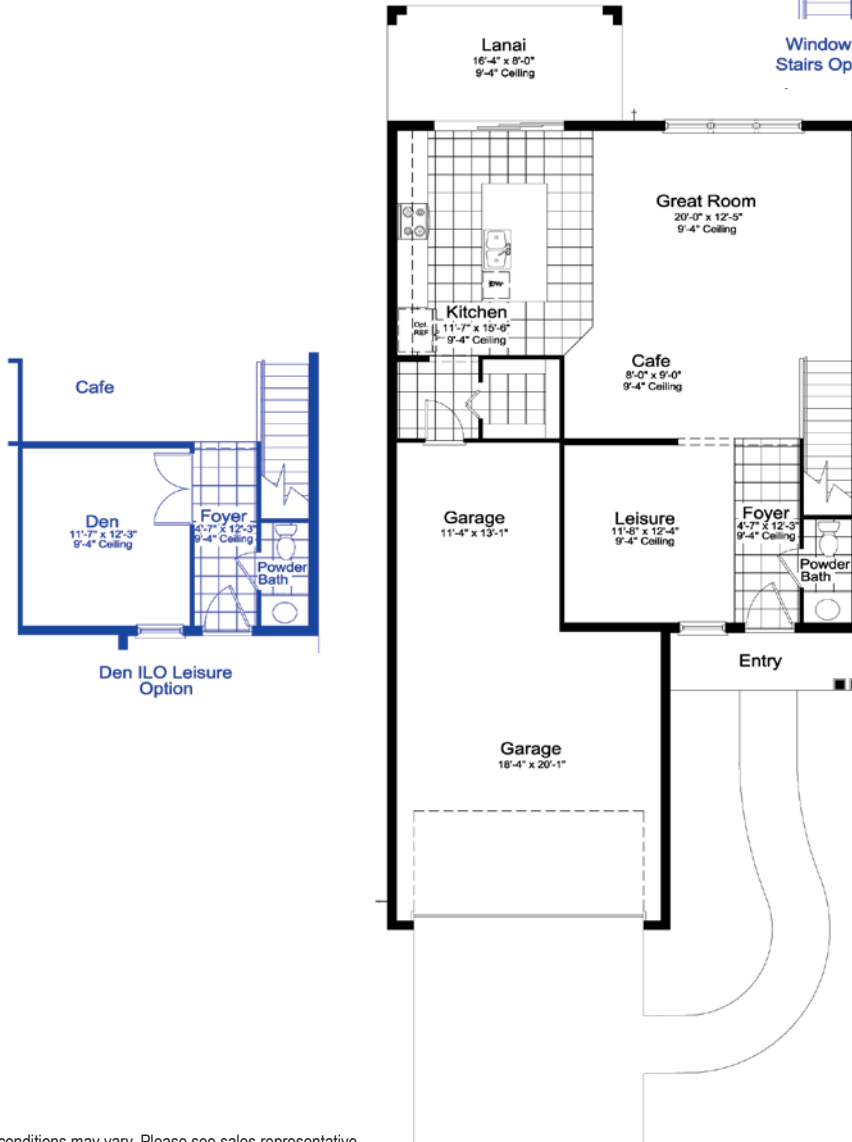
I-1



I-2



C-1



Upper Floor  
ELEVATION C1

**ELEVATIONS  
C-1 & FH-1**

1st Floor	1017 SF
2nd Floor	1126 SF
TOTAL	2143 SF
Garage	566 SF
Lanai	131 SF
Entry	53 SF
TOTAL	2893 SF

\*Site conditions may vary. Please see sales representative for details regarding elevations and plan variations



#### Where You Live Matters

- 50 years of building award-winning homes
- Over 90 successful communities and over 19,000 homes built
- Dedicated customer care team
- Personalized Neal Design Gallery selection session
- 10 year full structural warranty
- 1, 6 and 11 month warranty service inspections available
- 2 year mechanical warranty
- Highest customer care satisfaction rating

#### Neighborhood Features

- Recreation center with a fitness center, pool and spa, children's playground, picnic shelter with grills, basketball court, two dog parks and walking trails
- Beautifully landscaped entry and streets
- The proven quality, service and integrity of Neal Communities

#### Award-Winning Design Features

- Choice of custom-designed Coastal and Island elevations
- Decorative architectural details and shutters per plan
- Designer -selected exterior color palettes
- Professional in-house design service
- Exterior textured wall finish with siding and accents per plan

#### Luxury Features

- Orange peel walls with knock-down ceiling texture
- Classic colonial moldings
- 5-1/4" colonial baseboards
- Colonial windows in select locations
- Decorative yard light
- Corian window sills per plan
- Stylish lever door hardware
- Classic archtop 2-panel interior doors
- Professionally landscaped home site including mulch
- Automatic irrigation system (front yard only)
- Spacious closets with ventilated shelving per plan
- Plush, stain-resistant wall-to-wall carpeting in designer colors in areas per plan
- Long-lasting 17" ceramic tile floors in foyer, kitchen, baths and utility
- Air-conditioned laundry area with washer/dryer connections
- Spraycrete top-coat finish at entry and lanai

#### Quality Kitchen Features

- General Electric stainless steel appliance package:
  - 5-year General Electric warranty (disposal not included)
  - Over-the-range microwave
  - Gas range
  - Dishwasher
  - 1/2 HP disposal
- 36" upper full-overlay melamine flat-panel cabinets with stylish hardware
- Cabinet crown molding and bumped cabinet at microwave
- Granite countertops - choice of value colors
- Stainless steel undermount sink
- Chrome single-handle faucet
- Spacious pantry for additional storage per plan

#### Luxury Bath Features

- Corian white countertops with integral sinks and eased edge in baths
- Ceramic tile walls and glass shower enclosure in master bath per plan
- Elongated white water closet
- Full-overlay melamine flat-panel cabinets with stylish hardware

- Privacy water closet in master bath per plan
- Full-width vanity mirrors
- Chrome single lever faucets
- Water resistant drywall in all wet areas
- Towel bars and paper holders per plan
- Designer vanity lights
- White tub in guest bath
- Deco mirrored medicine cabinets per plan
- Outside vented exhaust fans in all baths

#### Quality Construction Features

- Professionally-engineered structural components
- Concrete block construction
- Maintenance-free soffit and fascia
- Two conveniently located exterior hose bibs
- Steel storm panels per plan
- CPVC or PEX water lines throughout
- Roof with architectural shingles
- Five-year exterior paint warranty
- Raised-panel overhead garage door with operator and remote controls, style per elevation

#### SMART HOME PACKAGE

- Smart thermostat with Z-wave technology
- Smart entry door deadbolt with Z-wave technology
- Connected HD video doorbell
- Smart hub to connect Z-wave devices
- Structured wiring system including Cat6 phone/data or RG6 cable outlet (choice of five locations)
- One wireless access point prewire



#### Energy Saving Features

- Vinyl windows with Low-E glass
- Aluminum sliding glass doors
- Natural gas piping per plan
- R-38 ceiling insulation
- Premium fiberglass insulated entry door with weather stripping
- Energy-efficient air conditioning system (SEER rating varies per plan)
- Insulated heating and cooling ductwork
- All air conditioning ductwork 3rd party tested by a Class 1 Energy Rater - certified to be substantially leak free
- 50 gallon gas or electric water heater and electric heat pump (The Liberty 3 & Victory are gas, the Honor is electric)
- Energy efficient lighting per plan

#### Quality Electric Features

- Decora light switches throughout
- Decorator light fixture in foyer
- All copper wiring from panel box
- Hardwired smoke detectors with battery backup
- Prewired for ceiling fans - choice of three locations
- GFI safety outlets in all wet areas
- GFI exterior outlets per plan

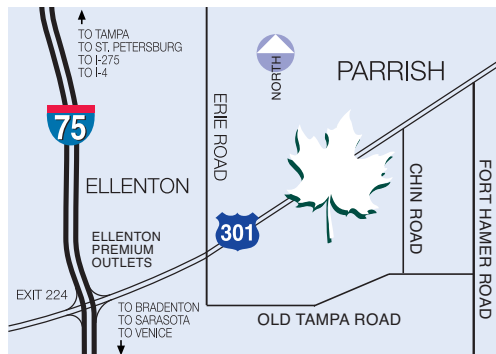


Silverleaf is an amenity-rich community surrounded by beautiful oak trees. Outstanding features include a recreation center with a fitness center, pool and spa, a children's playground, picnic shelter with grills, basketball court, two dog parks and walking trails.



CELEBRATION SERIES

CRUISE SERIES



10620 FALLING LEAF COURT, PARRISH, FLORIDA 34219 / 888.333.9162



2015 Professional Builder  
**BUILDER OF THE YEAR**