

**CELEBRATION
HOME SERIES**



SKYSAIL



NEALCOMMUNITIES
Where You Live Matters

CELEBRATION HOME SERIES



SKYSAIL



LEGEND

- Coral Series
- Cruise Series
- Celebration Series
- Cove Series
- Coastal Series
- Townhomes
- Linear Park



NEALCOMMUNITIES

Where You Live Matters



©2025 Neal Communities, Lakewood Ranch, Florida. All rights reserved. Neal Communities reserves the right to change elevations, and specifications without notice. All renderings and maps are an artist's conception, and are not intended to be an actual depiction of the buildings, fencing, walks, driveways or landscaping. All dimensions have been calculated from architectural drawings and may be subject to minor variations during construction. Product selections can change at any time due to availability in the current marketplace. This brochure is for informational purposes only, and should not be the sole basis of a decision to purchase any property. Please see our sales representatives with any questions. We do business in accordance with the Federal Fair Housing Law. CBC 1256375. (05.05.25)

CELEBRATION SERIES FEATURES



SKYSAIL

SOUTHWEST FLORIDA'S MOST EXPERIENCED BUILDER

- Over 50 years of building award-winning homes
- Over 100 successful communities
- Over 24,500 homes built
- Dedicated customer care team
- Personalized Neal Design Gallery selection session
- 10-year full structural warranty
- 1, 6 and 11 month warranty service inspections available
- 2-year mechanical warranty
- Highest customer care satisfaction rating

NEIGHBORHOOD FEATURES

- 246 acres of lakes offering beautiful waterfront views
- 2 dog parks, 3 community event lawns, a lakehouse and a wellness center
- 3-mile perimeter trail
- Resort-style pool, lap pool and a spa
- A fishing pier, 8 pickleball and 2 tennis courts plus an outdoor gaming area with ping-pong and checker tables
- Easy access to Paradise Coast Sports Complex, a premier sports and special events venue

AWARD-WINNING DESIGN FEATURES

- Choice of custom-designed Tuscan, Northern Italian, Coastal, and Florida Modern elevations
- Decorative architectural details and shutters per plan
- Designer-selected exterior color palettes
- Professionally designed landscape package
- Professional in-house design service
- Neal Design Gallery offers choices for personalization of your home
- Exterior textured wall finish with siding OR banding and accents per plan
- The proven quality, service, and integrity of Neal Communities

LUXURY FEATURES

- Textured finish on walls and ceiling
- Classic colonial moldings
- 3-1/4" colonial baseboards
- Colonial windows (in select locations)
- Decorative coach lights
- Solid Surface window sills per plan
- Stylish lever door hardware
- Classic 2-panel interior doors
- Gutters included on sides per plan
- Professionally landscaped home site including mulch and automatic irrigation system
- Spacious closets with ventilated shelving (per plan)
- Plush, stain-resistant wall-to-wall carpeting in designer colors in areas per plan
- Long-lasting 17" ceramic tile floors in foyer, kitchen, baths and utility
- Air-conditioned laundry area with washer/dryer connections
- Painted garage floor
- Paver entry, walk, drive and lanai

QUALITY KITCHEN FEATURES

- General Electric stainless steel appliance package:
 - 5-year General Electric warranty
 - Over-the-range microwave
 - Refrigerator
 - Gas range
 - Dishwasher
- Moen 1/2 HP disposal
- 42" upper recessed panel wood veneer cabinets with stylish hardware
- Cabinet crown molding and bumped cabinet at microwave/hood
- Granite countertops - choice of value colors
- Stainless steel undermount sink
- Chrome single-handle faucet
- Spacious pantry for additional storage per plan



CELEBRATION SERIES FEATURES



SKYSAIL

LUXURY BATH FEATURES

- Corian white countertops with integral sinks and eased edge in baths
- Ceramic tile walls and glass shower enclosure in master bath per plan
- Elongated white water closet
- Recessed panel wood veneer cabinets with stylish hardware (Timberlake)
- Privacy water closet in master bath per plan
- Full-width vanity mirrors
- Chrome single lever faucets
- Water resistant drywall in all wet areas
- Towel bars and paper holders per plan
- Designer vanity lights
- White tub in guest bath
- Outside vented exhaust fans in all baths

QUALITY CONSTRUCTION FEATURES

- Professionally-engineered structural components
- Concrete block construction (first floor only)
- Maintenance-free soffit and fascia
- Two conveniently located exterior hose bibs
- Steel storm panels per plan
- PEX water lines throughout
- Roof with concrete roof tiles
- Five-year exterior paint warranty
- Raised-panel overhead garage door with operator and remote controls, style per elevation

ENERGY SAVING FEATURES

- Insulated Low-E double glazed windows and sliding glass doors
- Natural gas piping per plan
- R-38 ceiling insulation
- Premium fiberglass insulated entry door with weather stripping
- Energy-efficient air conditioning system (SEER rating varies per plan)
- Insulated heating and cooling ductwork
- All air conditioning ductwork 3rd party tested by a Class 1 Energy Rater - certified to be substantially leak free
- 50 gallon gas or electric water heater per plan
- Energy efficient lighting per plan

QUALITY ELECTRIC FEATURES

- Decora light switches throughout
- Decorator light fixture in foyer
- All copper wiring from panel box
- Hardwired smoke detectors with battery backup
- Prewired for ceiling fans - choice of three locations
- Arc prevention circuits in bedrooms
- GFI safety outlets in all wet areas
- GFI exterior outlets per plan



SMART HOME PACKAGE

- Smart thermostat with Z-wave technology
- Smart entry door deadbolt with Z-wave technology
- Connected HD video doorbell
- Smart hub to connect Z-wave devices
- Structured wiring system to include five (5) Cat 5 phone/data outlets (choice of locations)
- One wireless access point prewire

4056 SkySail Drive, Naples, FL 34120 | 239.990.2125 | SkySailFL.com



**CELEBRATION
HOME SERIES**



SKYSAIL



FRESH SPRING

1,812 Sq Ft

1 Story

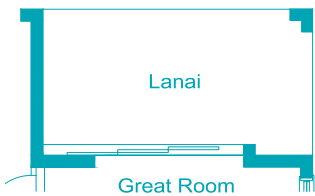
3 Beds

2 Baths

2-Car Garage

3 Bedrooms, 2 Baths, 2-Car Garage

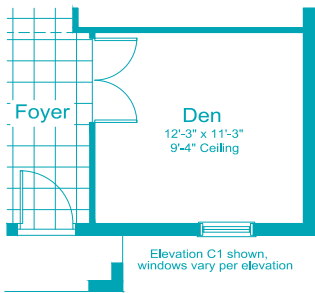
Living Area 1,812 Sq. Ft.
Garage 471 Sq. Ft.
Lanai 139 Sq. Ft.
Entry 23 Sq. Ft.
Total Area 2,445 Sq. Ft.



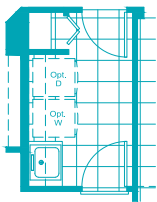
Pocket Slider Dr Option



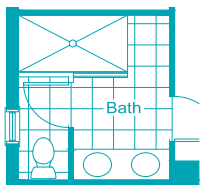
Outdoor Kitchen Wall Option



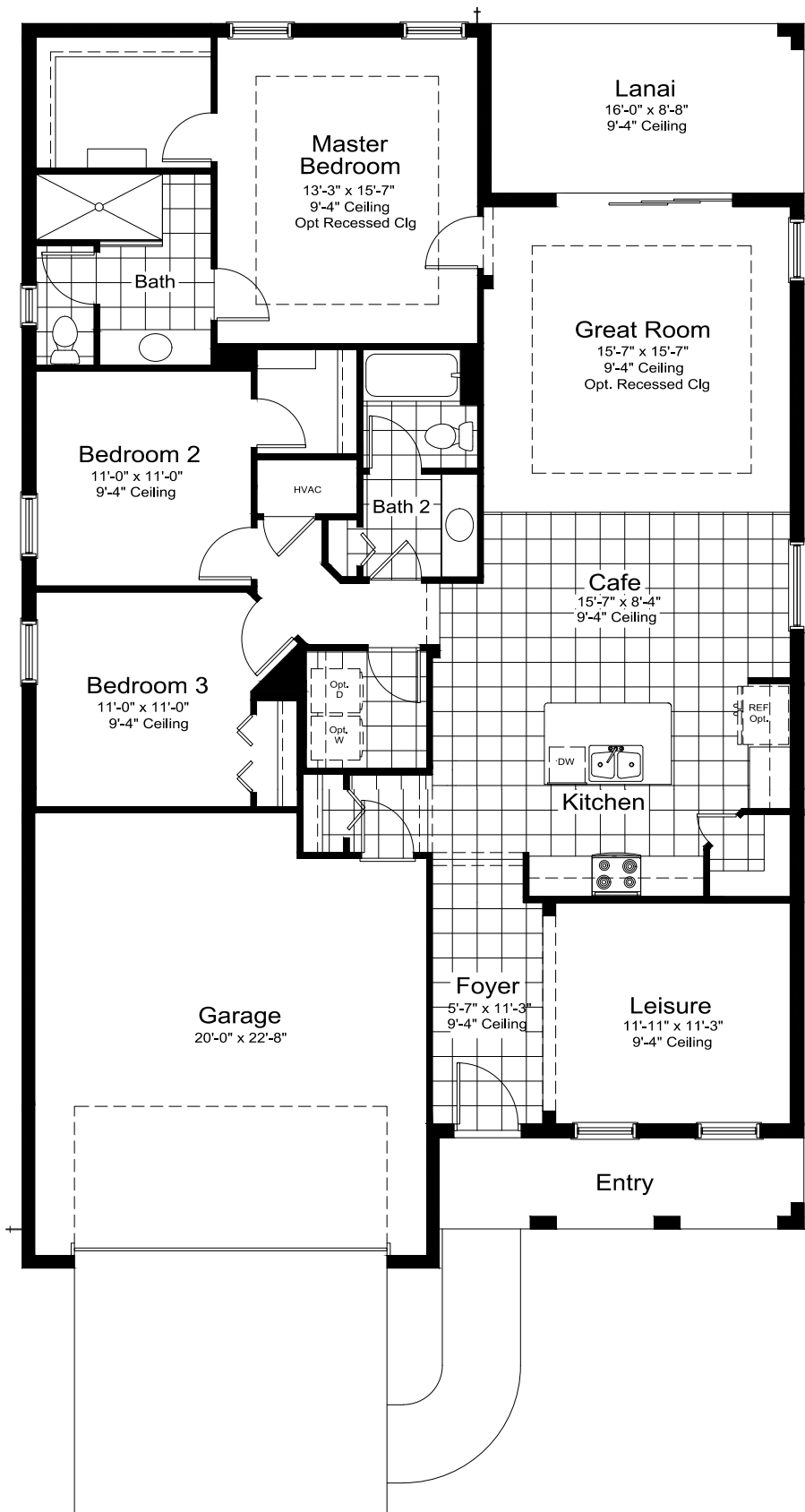
Den ILO Lesuire Option



Opt Utility



Master Bath Double Sink Option
Not available w/ Master Bath Option



**CELEBRATION
HOME SERIES**



SKYSAIL



NI-2



FM-1



C-1

MEADOW BROOK

2,014 Sq Ft

1 Story

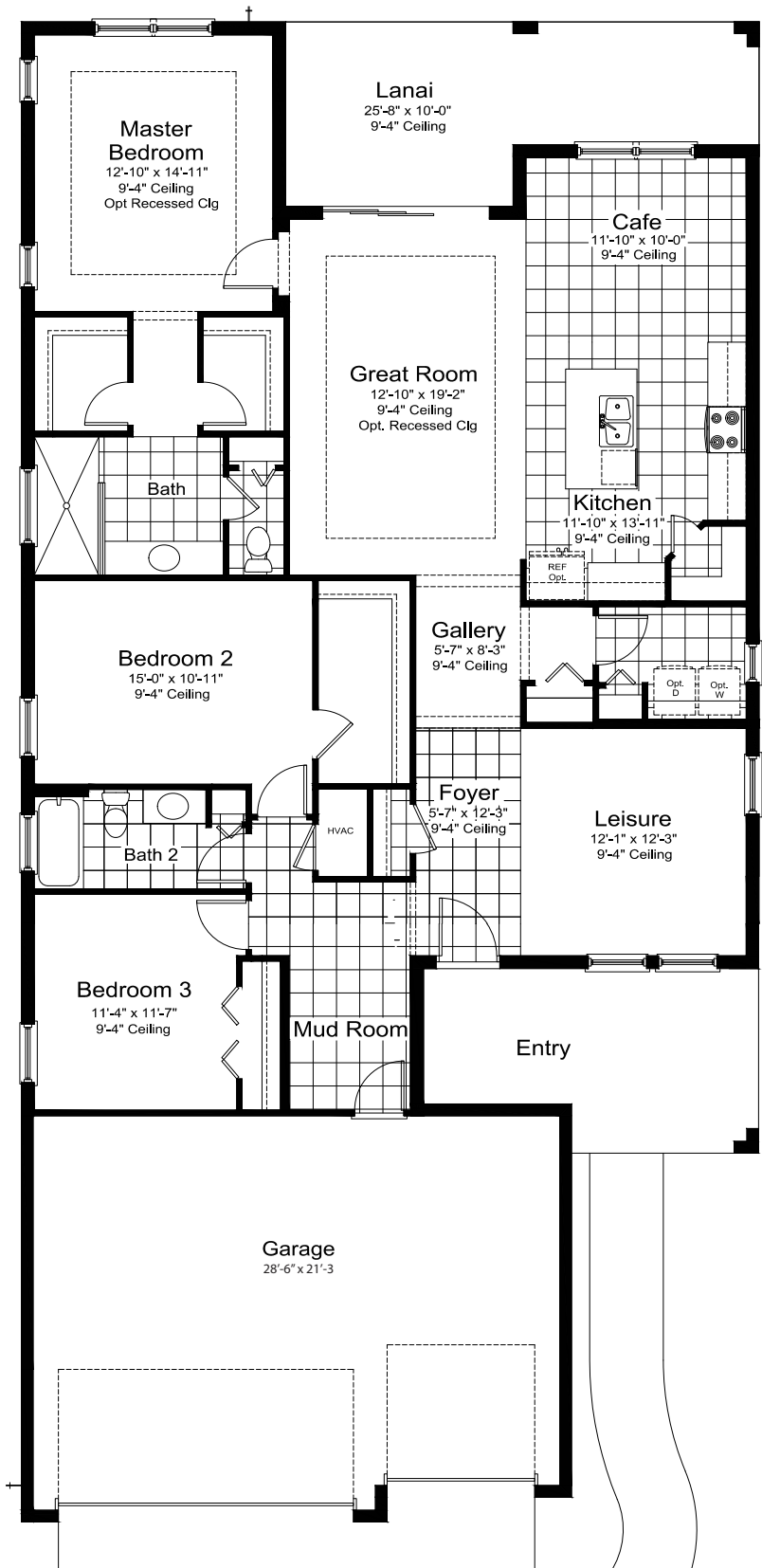
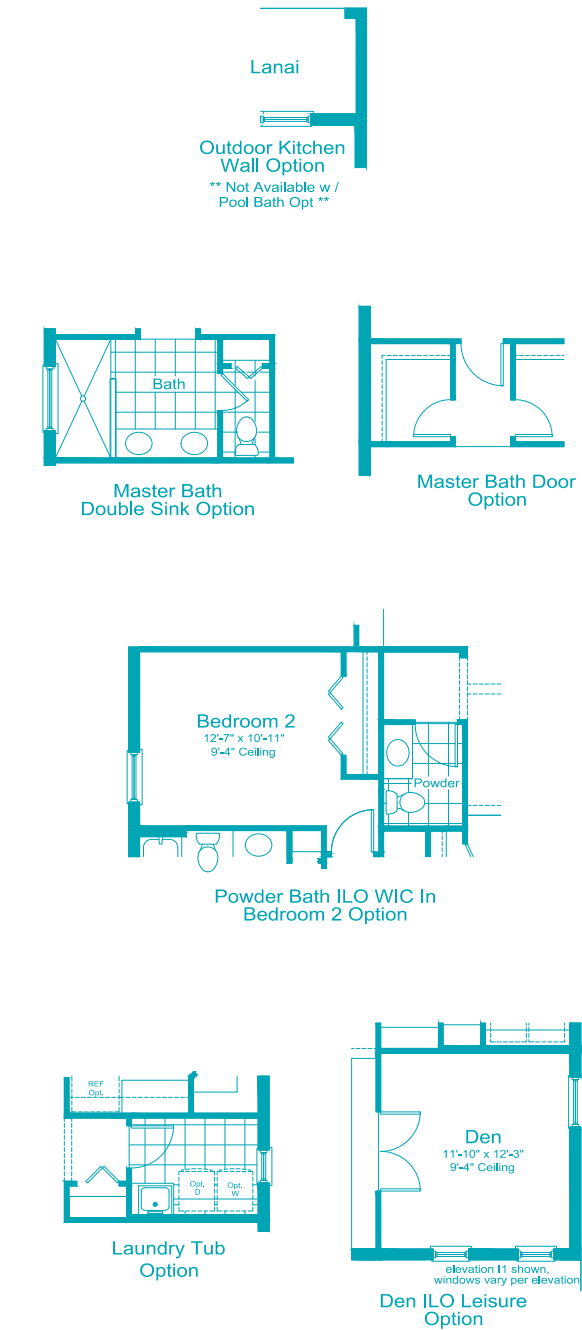
3 Beds

2 Baths

3-Car Garage

3 Bedrooms, 2 Baths, 3-Car Garage

Living Area	2,014 Sq. Ft.
Garage	649 Sq. Ft.
Lanai	212 Sq. Ft.
Entry	160 Sq. Ft.
Total Area	3,035 Sq. Ft.



**CELEBRATION
HOME SERIES**



SKYSAIL



NI-3



FM-1



C-1

WHITE STAR

2,064 Sq Ft

1 Story

3 Beds

2.5 Baths

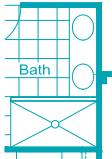
Dining Room

2-Car Garage

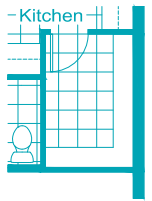
3 Bedrooms, 2.5 Baths,
Dining Room, 2-Car Garage
Living Area 2,064 Sq. Ft.
Garage 453 Sq. Ft.
Lanai 223 Sq. Ft.
Entry 60 Sq. Ft.
Total Area 2,800 Sq. Ft.



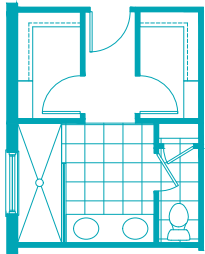
Lanai
Outdoor Kitchen Wall Option



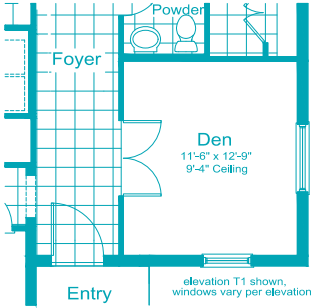
Bath
Master Bath Double Sink Option



Kitchen
Walk-in Pantry Option



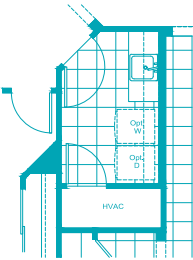
Optional Master Bath w/ Double Closet



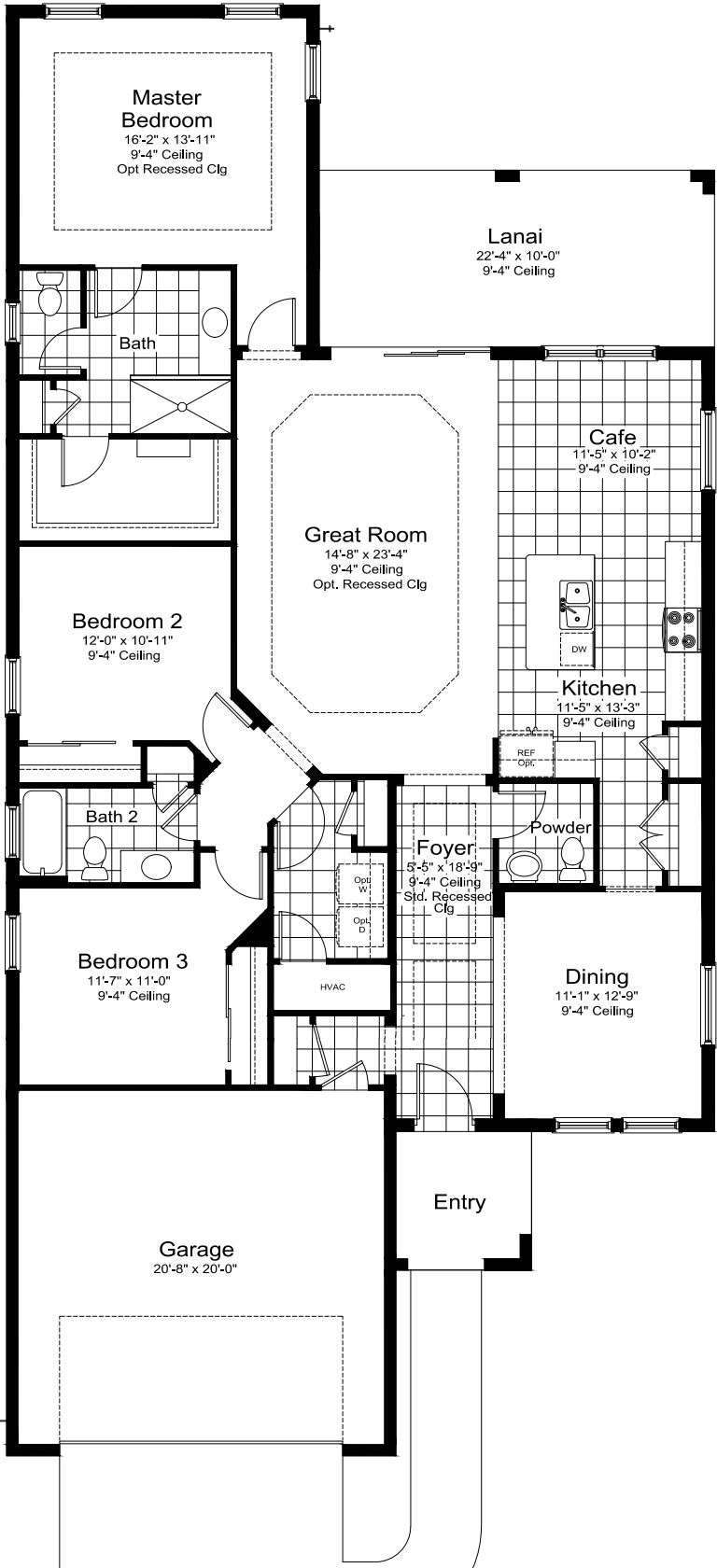
Den ILO Dining Option
** Not Available w / Guest Suite Opt **



Kitchen
Dining
Butler Pantry Option
** Not Available w / Walk-in Pantry **



Laundry Tub Option



©2025 Neal Communities, Lakewood Ranch, Florida. All rights reserved. Neal Communities reserves the right to change elevations, and specifications without notice. All renderings and maps are an artist's conception, and are not intended to be an actual depiction of the buildings, fencing, walks, driveways or landscaping. Entry walkways shown on floorplans and renderings are not representative of the actual layout of the finished sidewalk your specific home may have. Please speak to a sales associate for details. All dimensions have been calculated from architectural drawings and may be subject to minor variations during construction. Product selections can change at any time due to availability in the current marketplace. This brochure is for informational purposes only, and should not be the sole basis of a decision to purchase any property. Please see our sales representatives with any questions. We do business in accordance with the Federal Fair Housing Law. CBC 1256375. (07.21.25)

**CELEBRATION
HOME SERIES**



SKYSAIL



NI-1



C-1



I-1

BRILLIANCE

2,079 Sq Ft

1 Story

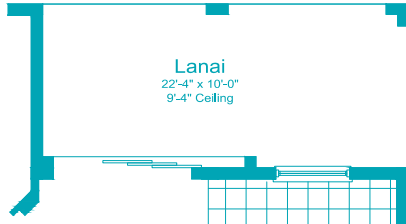
3 Beds

2.5 Baths

Leisure Room

3-Car Garage

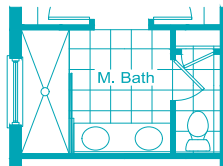
3 Bedrooms, 2.5 Baths,
Leisure Room, 3-Car Garage
Living Area 2,079 Sq. Ft.
Garage 633 Sq. Ft.
Lanai 223 Sq. Ft.
Entry 132 Sq. Ft.
Total Area 3,067 Sq. Ft.



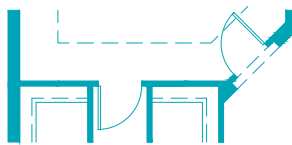
Opt Pocket Sliding Glass Door in Great Room w/ Single Window in Breakfast



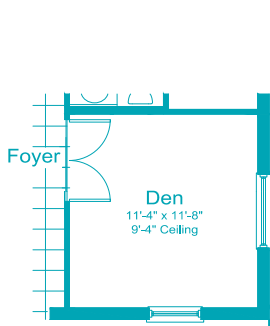
Opt Outdoor Kitchen Wall



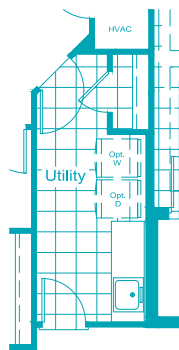
Master Bath Full Glass Shwr Encl Option



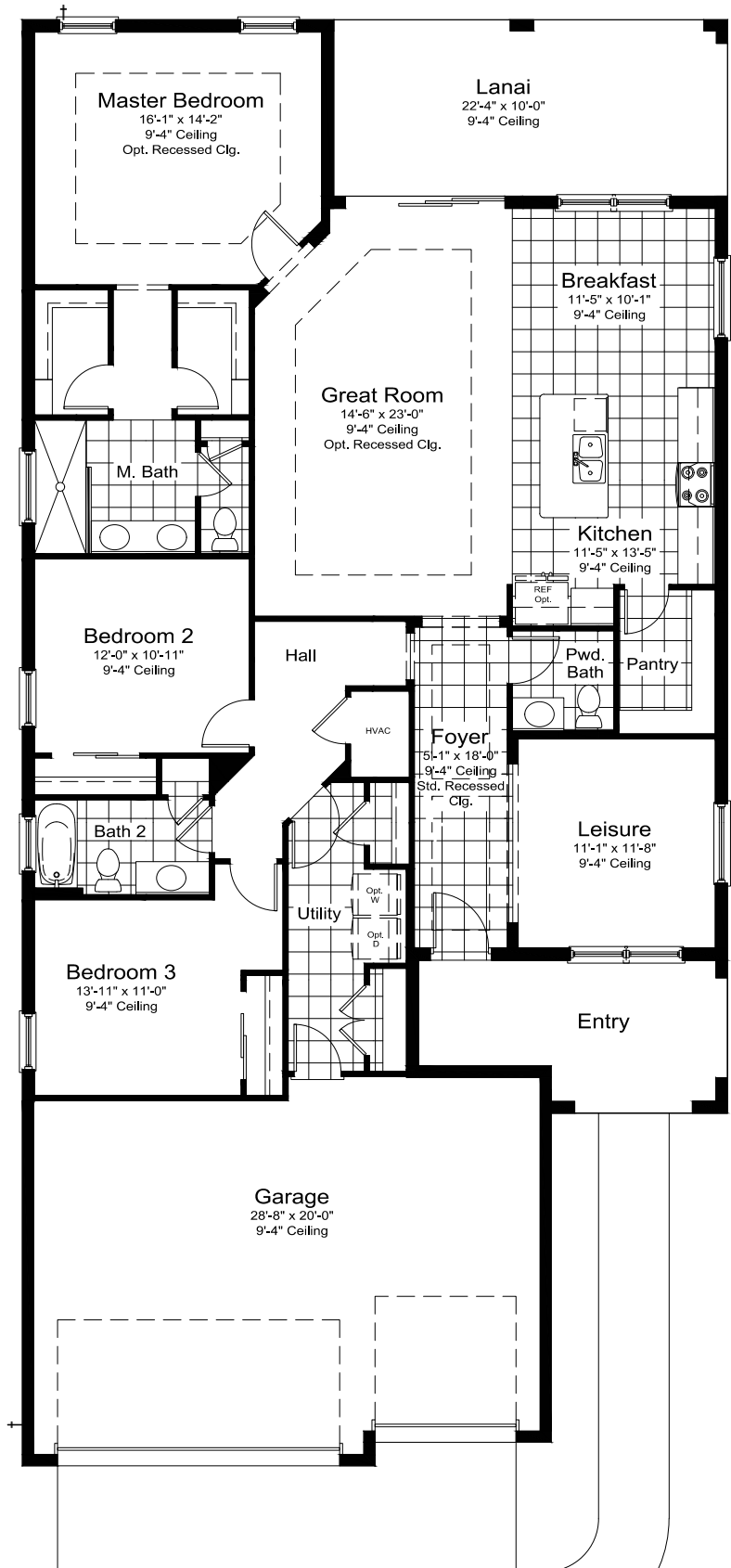
Opt Master Bath Door



Opt Den ilo Leisure



Laundry Tub Option



**CELEBRATION
HOME SERIES**



SKYSAIL



TRIUMPH

2,332 Sq Ft

1 Story

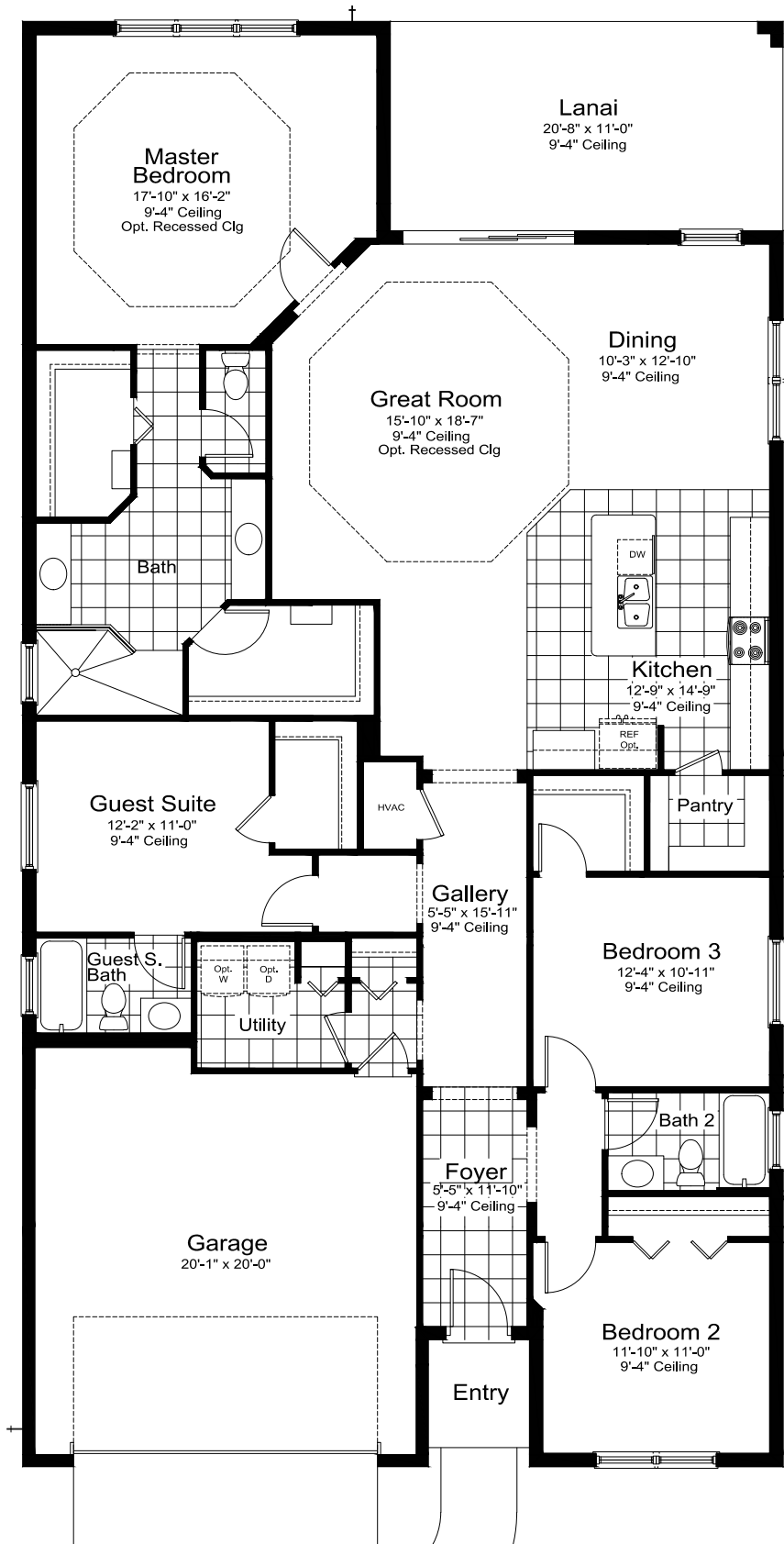
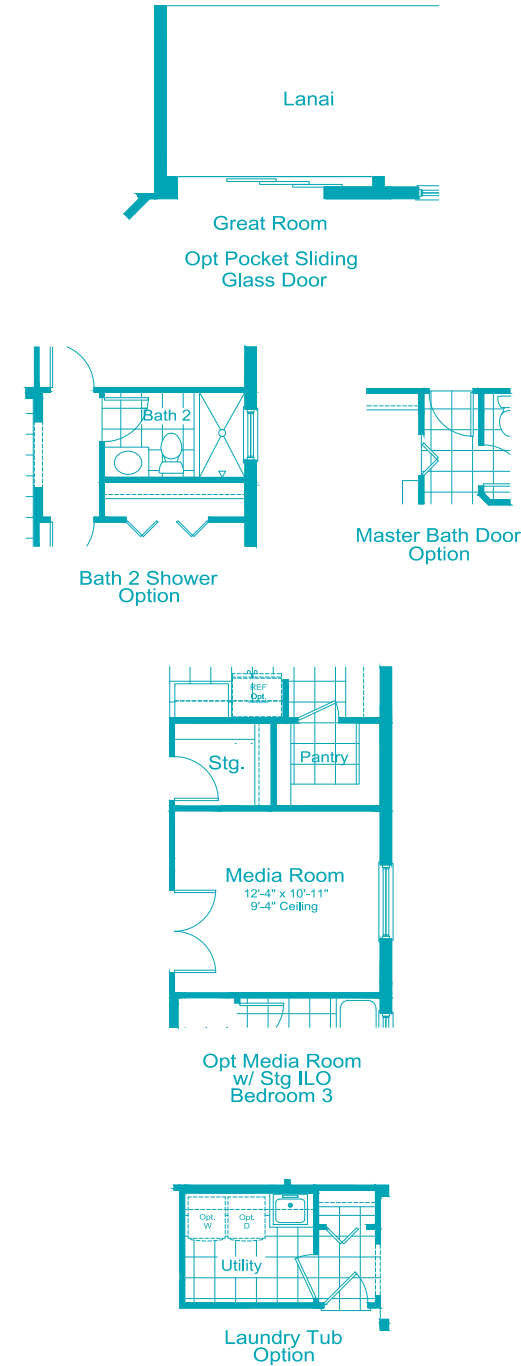
3 Beds

3 Baths

Guest Suite

2-Car Garage

3 Bedrooms, 3 Baths, Guest Suite,
2-Car Garage
Living Area 2,332 Sq. Ft.
Garage 445 Sq. Ft.
Lanai 228 Sq. Ft.
Entry 30 Sq. Ft.
Total Area 3,035 Sq. Ft.



**CELEBRATION
HOME SERIES**



SKYSAIL



NI-1



C-1



FM-1

LIGHTHOUSE

2,601 Sq Ft

2 Story

4 Beds

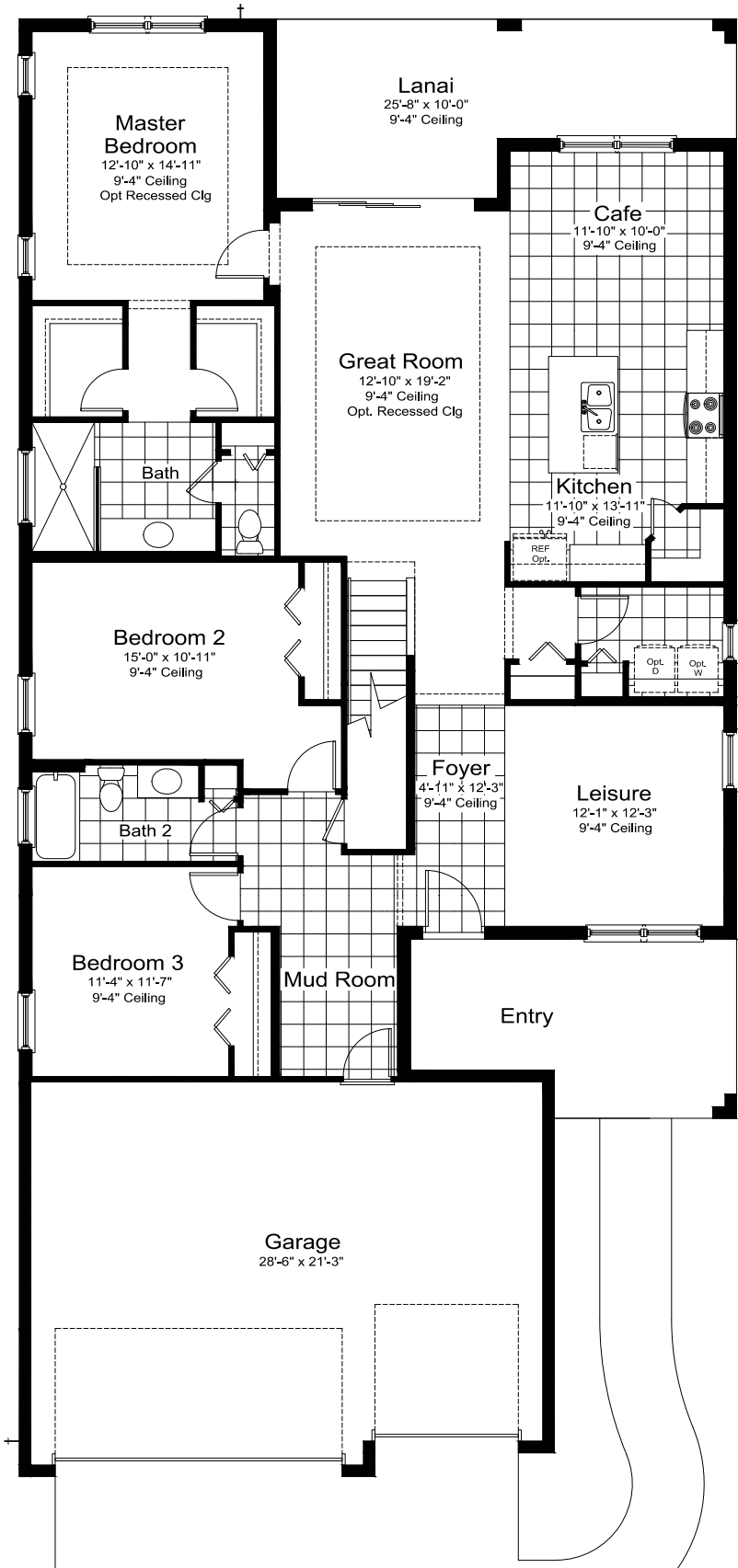
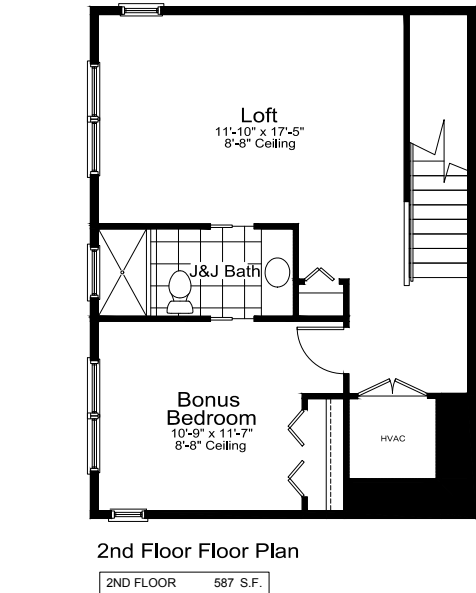
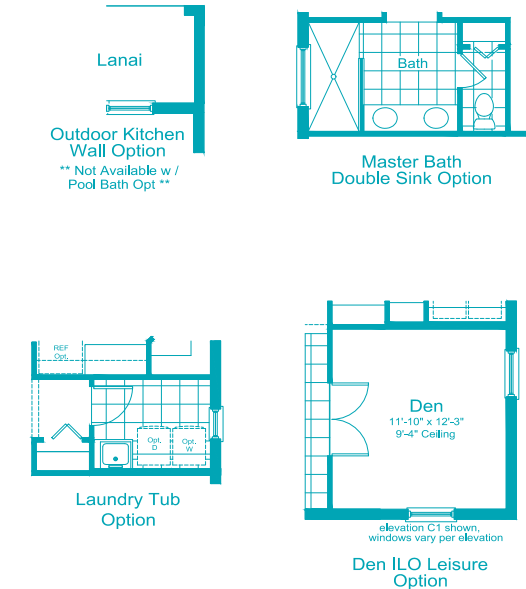
3 Baths

Loft

3-Car Garage

4 Bedrooms, 3 Baths, Loft,
3-Car Garage

Living Area	2,601 Sq. Ft.
Garage	649 Sq. Ft.
Lanai	212 Sq. Ft.
Entry	160 Sq. Ft.
Total Area	3,622 Sq. Ft.



**CELEBRATION
HOME SERIES**



SKYSAIL



NI-1



FM-1



C-1

ARTISTRY

3,486 Sq Ft

2 Story

4 – 5 Beds

3 – 4.5 Baths

2-Car Garage

4 Bedrooms, 3 Baths, 2-Car Garage

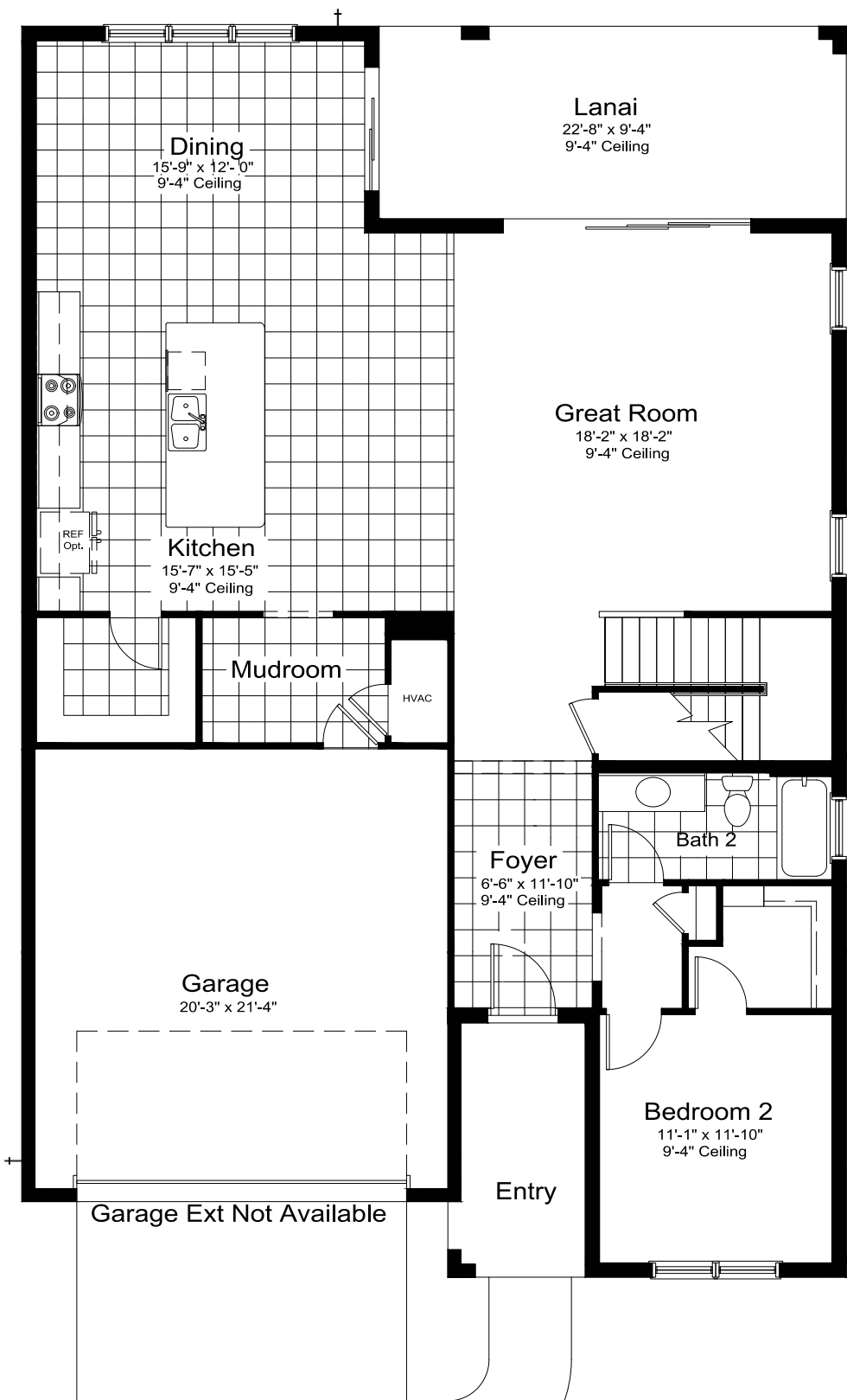
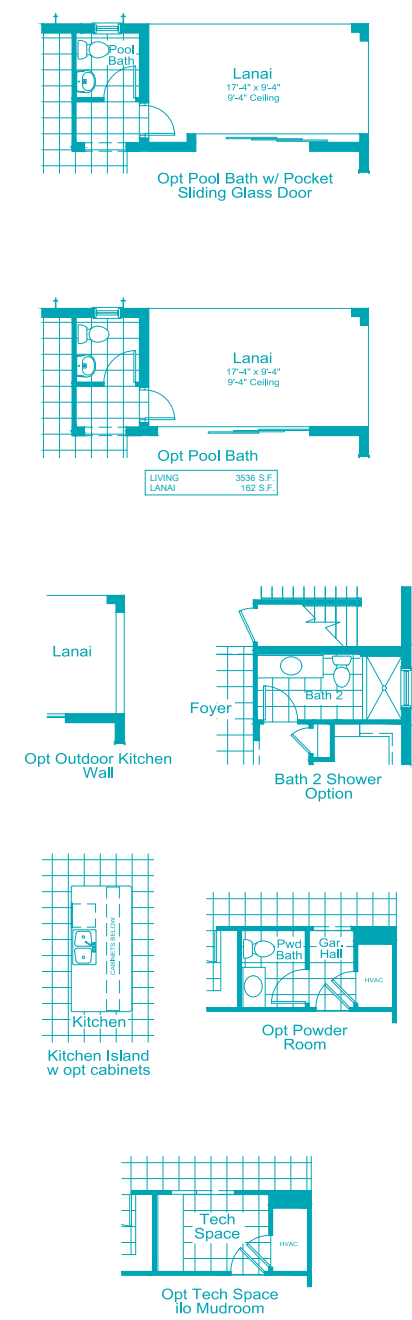
Living Area 3,486 Sq. Ft.

Garage 454 Sq. Ft.

Lanai 212 Sq. Ft.

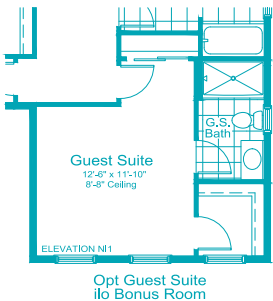
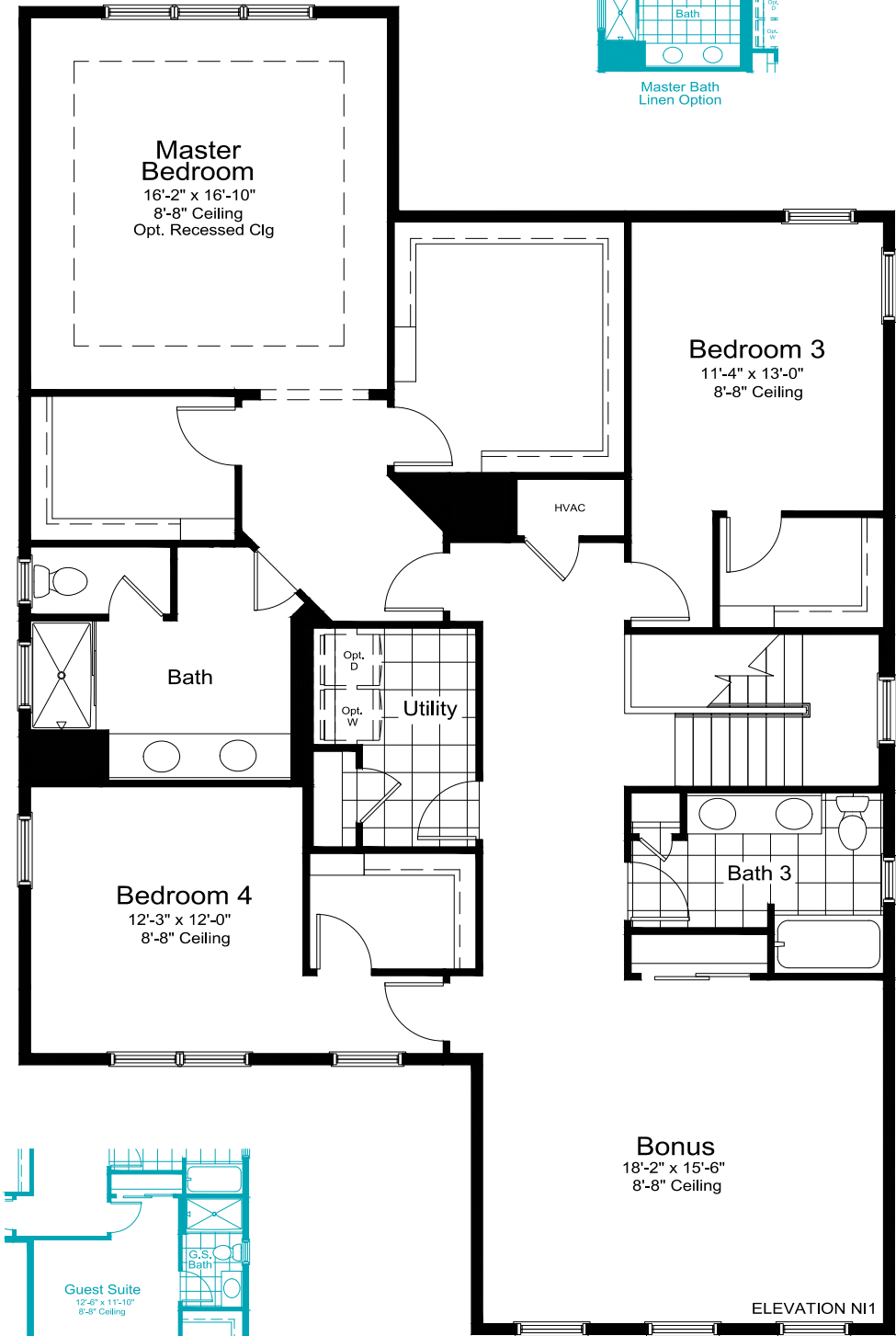
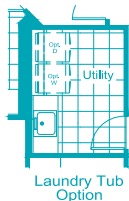
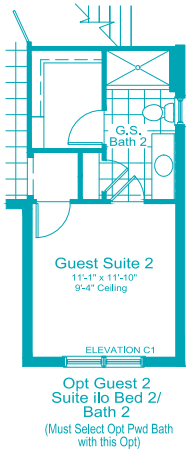
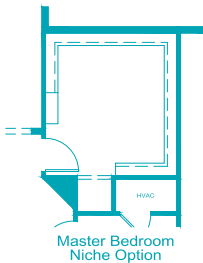
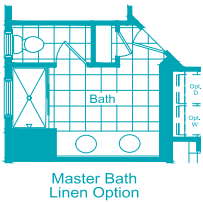
Entry 77 Sq. Ft.

Total Area 4,229 Sq. Ft.



4 Bedrooms, 3 Baths, 2-Car Garage

Living Area 3,486 Sq. Ft.
Garage 454 Sq. Ft.
Lanai 212 Sq. Ft.
Entry 77 Sq. Ft.
Total Area 4,229 Sq. Ft.



Upper Floor