







I-3



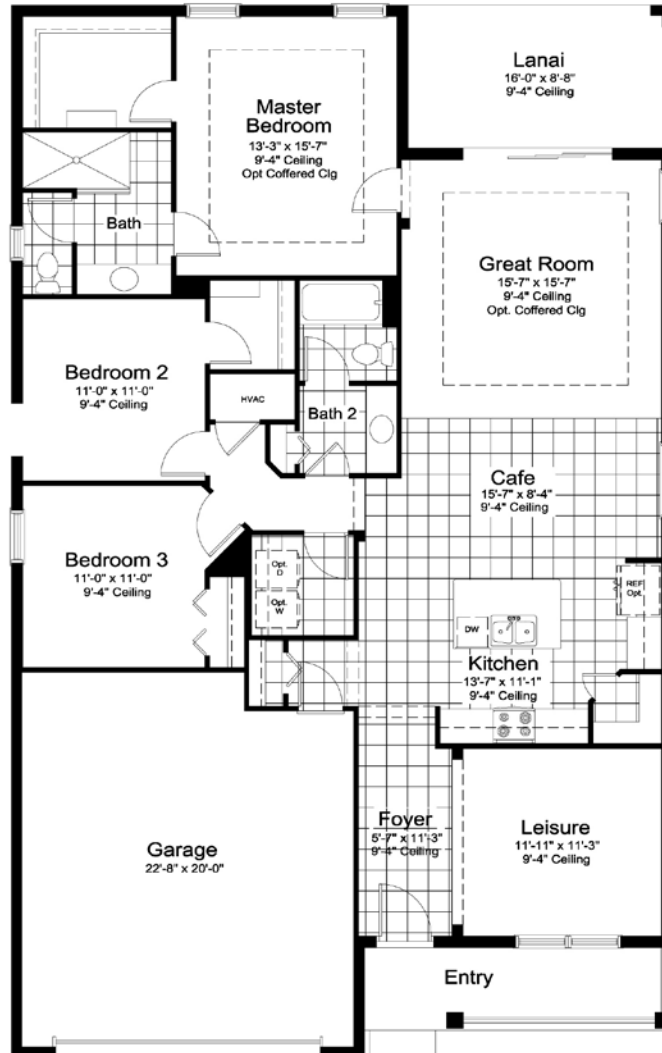
C-1



Master Bath Option
Not available w/ Master Bath Dbl sink Option



Master Bath Double Sink Option
Not available w/ Master Bath Option



I-3



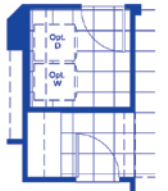
Bath 2 Double Sink Option



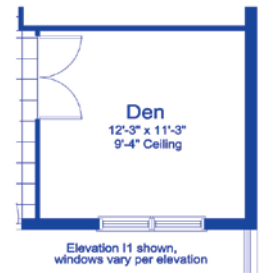
Bath 2 Shower Option



Opt Utility Room
Not available w/ Mud Room Cabinet Option



Garage Hall Cabinets Option
Not available w/ Opt Utility Room



Elevation I1 shown, windows vary per elevation

Den ILO Lesuire Option

ELEVATION I-3

Living	1812 SF
Garage	471 SF
Lanai	139 SF
Entry	93 SF
TOTAL	2515 SF

*Site conditions may vary. Please see sales representative for details regarding elevations and plan variations



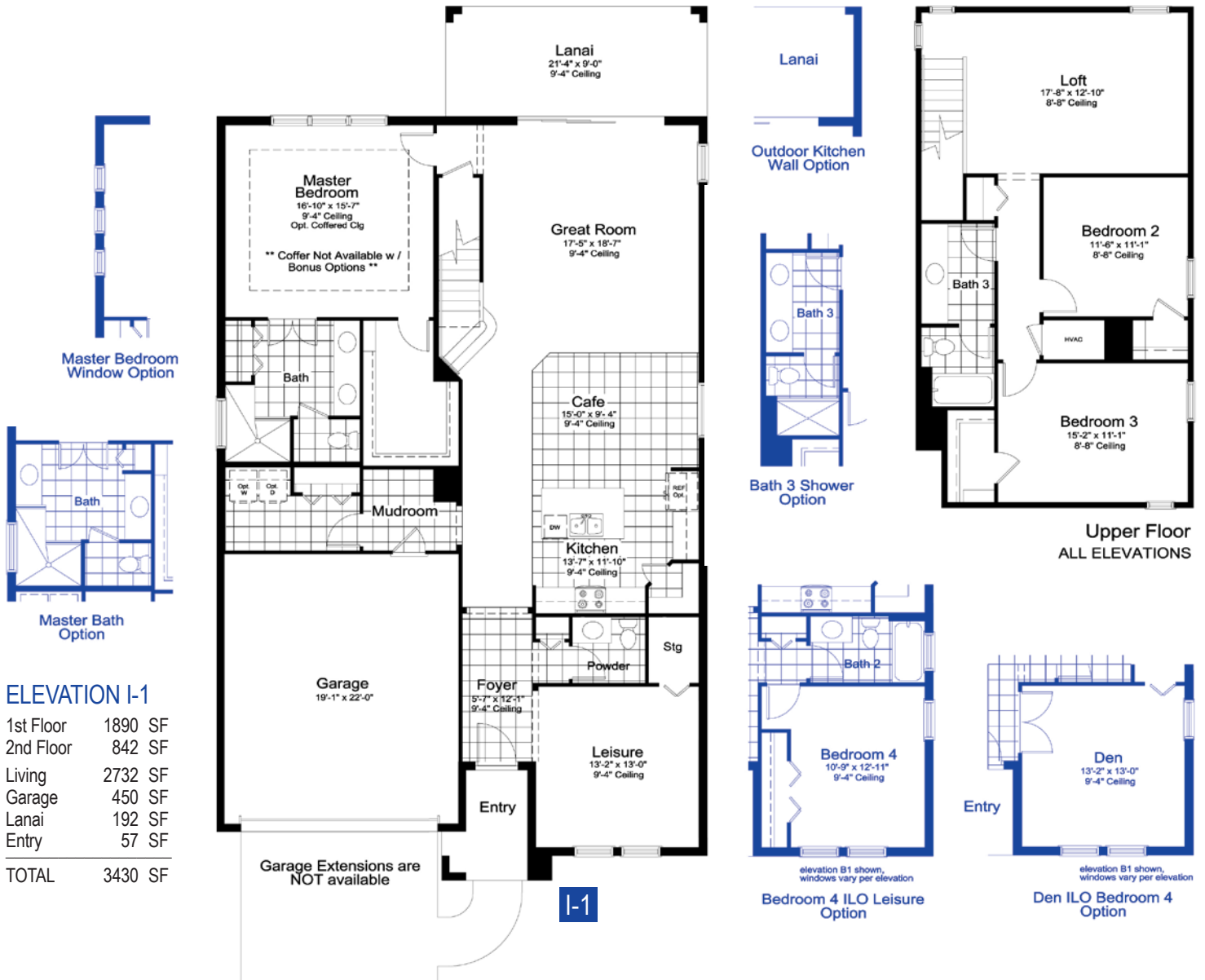
I-1



C-1



I-2



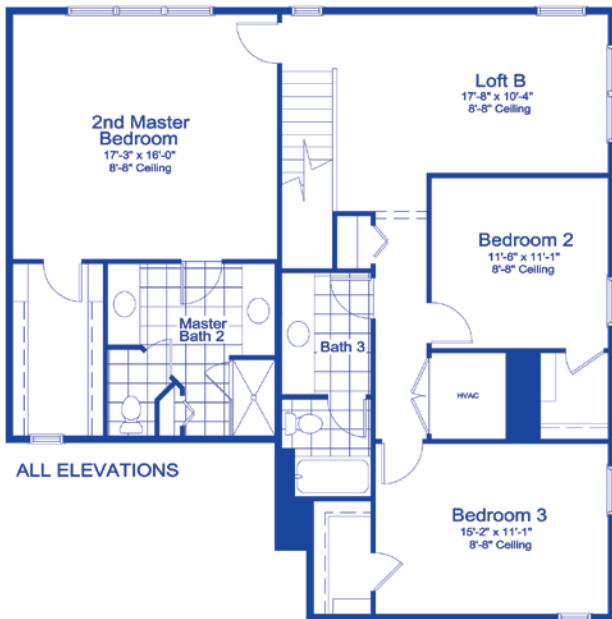
ELEVATION I-1

1st Floor	1890 SF
2nd Floor	842 SF
Living	2732 SF
Garage	450 SF
Lanai	192 SF
Entry	57 SF
TOTAL	3430 SF

*Site conditions may vary. Please see sales representative for details regarding elevations and plan variations

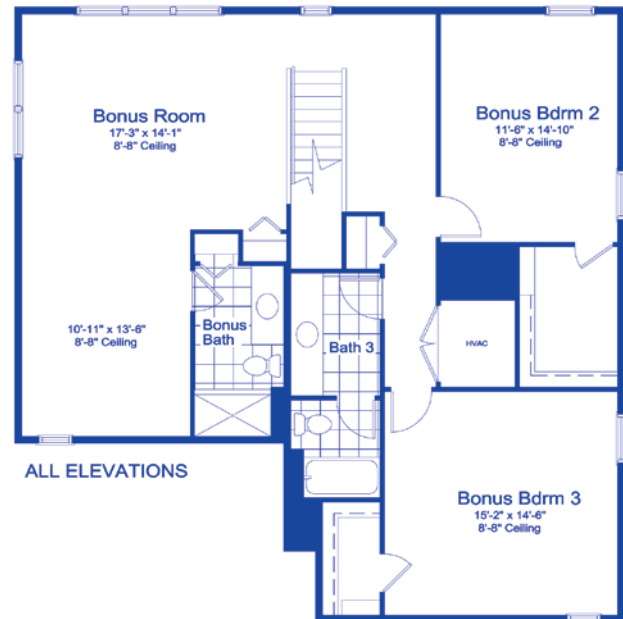

I-1 BONUS

C-1 BONUS

I-2 BONUS


Extended Bonus with 2nd Master Suite Opt

2ND FLOOR 1354 S.F.



Extended Bonus with Full Bath Opt

2ND FLOOR 1354 S.F.

ELEVATION I-1

1st Floor	1890 SF
2nd Floor	842 SF
Living	2732 SF
Garage	450 SF
Lanai	192 SF
Entry	57 SF

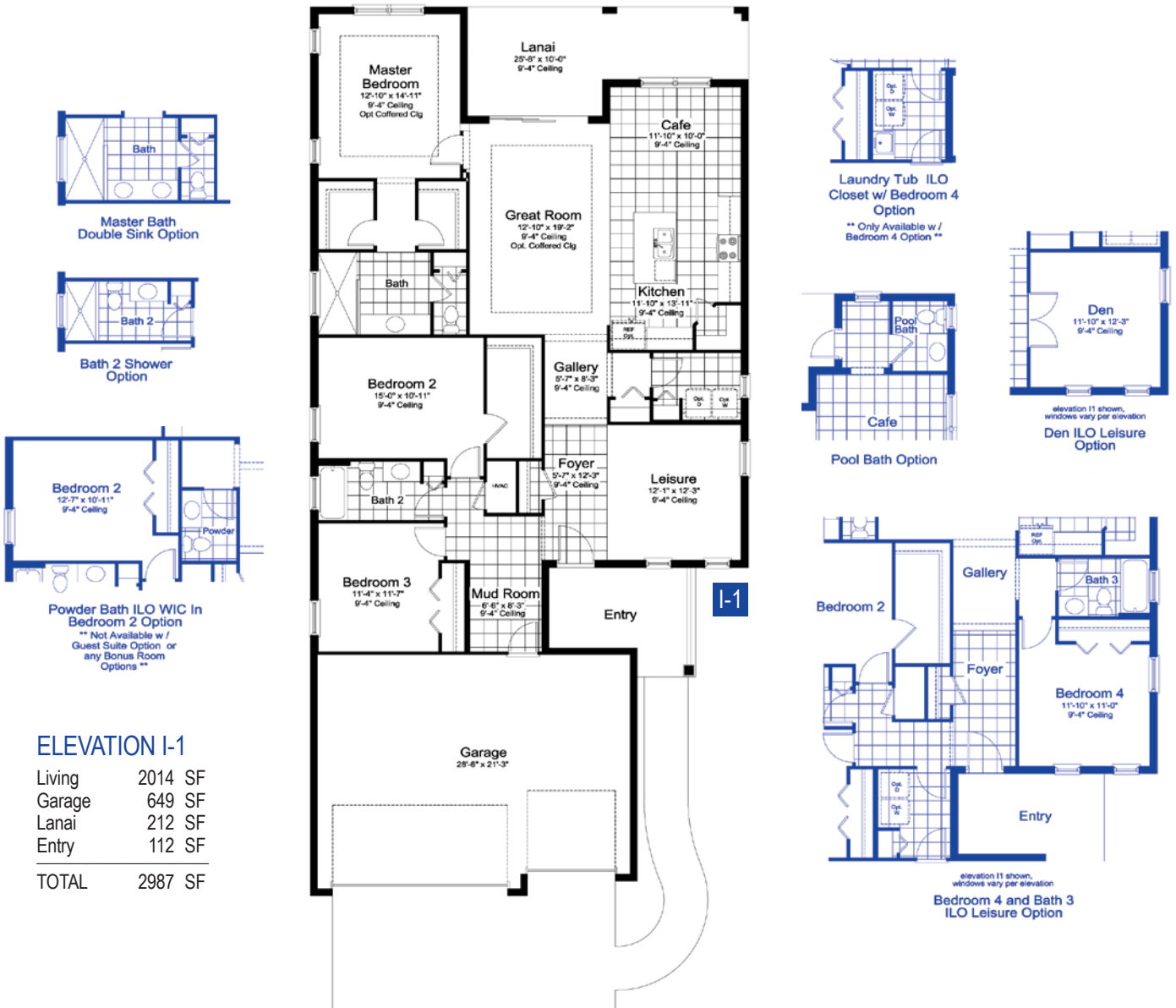
TOTAL 3430 SF
WITH UPSTAIRS BONUS ROOM

Opt Bonus 1354 SF

TOTAL 3942 SF

*Site conditions may vary. Please see sales representative for details regarding elevations and plan variations


I-1

C-1

ELEVATION I-1

Living	2014 SF
Garage	649 SF
Lanai	212 SF
Entry	112 SF
TOTAL	2987 SF

*Site conditions may vary. Please see sales representative for details regarding elevations and plan variations


I-1 BONUS

C-1 BONUS

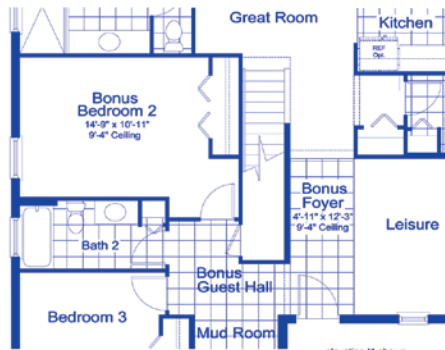

2ND FLOOR 587 S.F.

Opt Bonus w/ 2nd Master


2ND FLOOR 587 S.F.

Opt Bonus w/ Bonus Bath


2ND FLOOR 587 S.F.

Opt Bonus w/ Bonus Bed and J&J Bath

 elevation 11 shown,
windows vary per elevation
**Partial First Floor
Stair w/ Opt Bonus Room**
ELEVATION I-1

Living	2014 SF
Garage	649 SF
Lanai	212 SF
Entry	112 SF

TOTAL 2987 SF
**WITH UPSTAIRS
BONUS ROOM**

Opt Bonus 587 SF

TOTAL 3574 SF

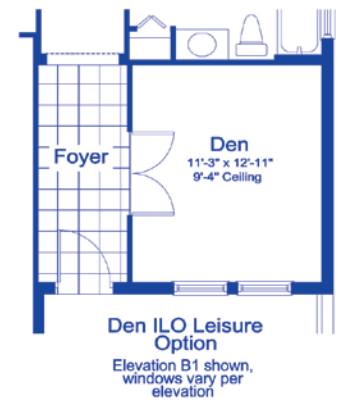
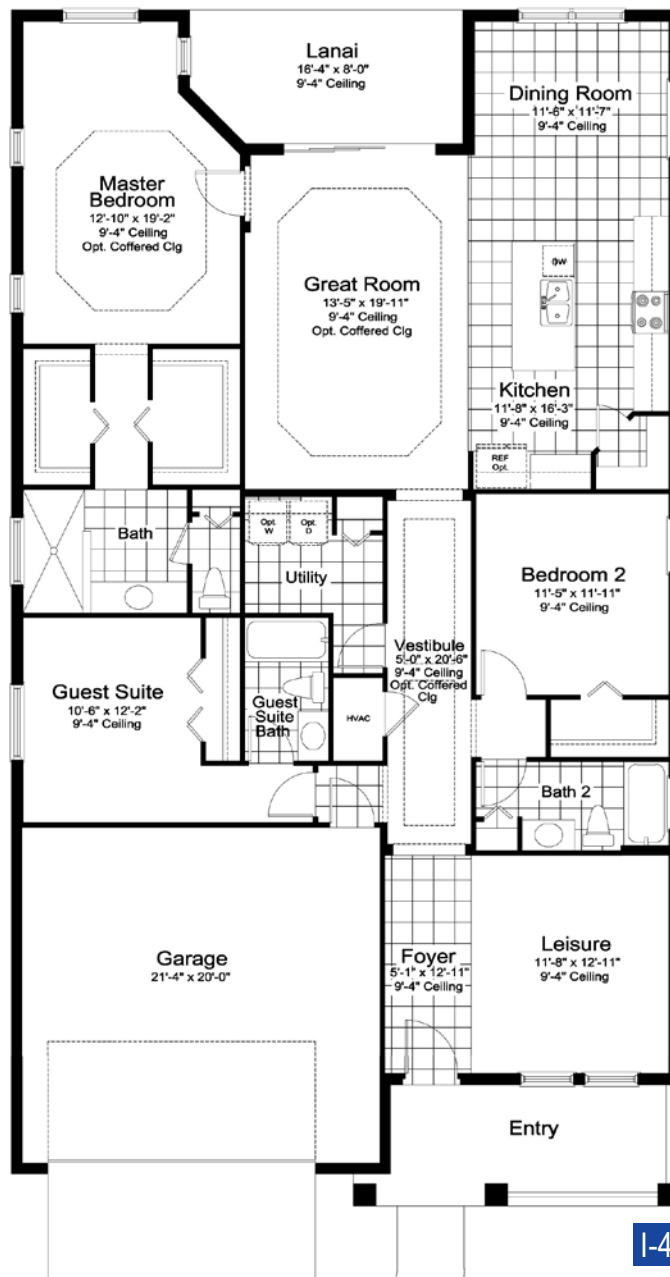
*Site conditions may vary. Please see sales representative for details regarding elevations and plan variations



I-4



C-2



ELEVATION I-4

Living	2110 SF
Garage	460 SF
Lanai	125 SF
Entry	130 SF
TOTAL	2825 SF

I-4

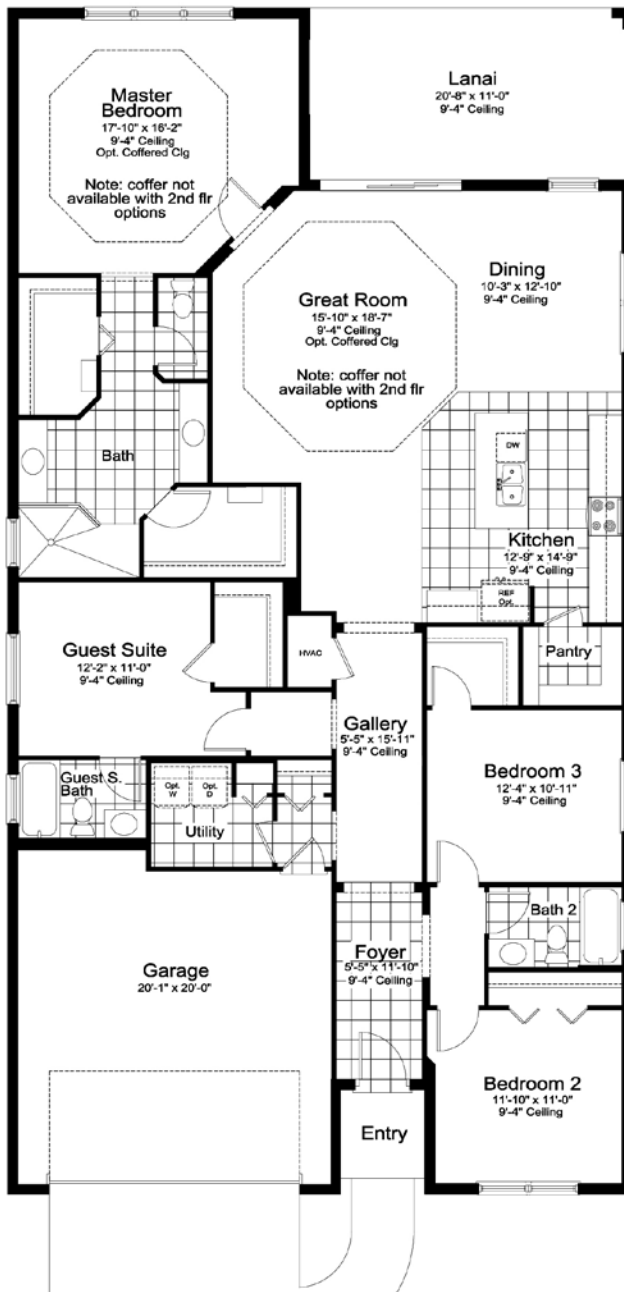
*Site conditions may vary. Please see sales representative for details regarding elevations and plan variations



I-1



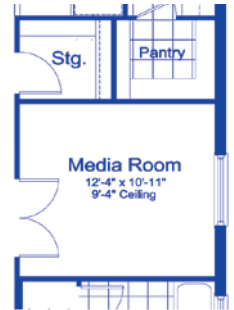
C-1



Opt Media Room w/ Powder Bath ILO Bedroom 3



Opt Powder Bath ILO WIC Bedroom 3



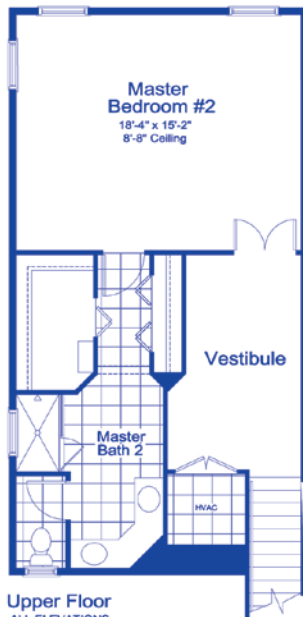
Opt Media Room w/ Stg ILO Bedroom 3

ELEVATIONS I-1 & C-1

Living	2332 SF
Garage	445 SF
Lanai	228 SF
Entry	30 SF
TOTAL	3035 SF

*Site conditions may vary. Please see sales representative for details regarding elevations and plan variations

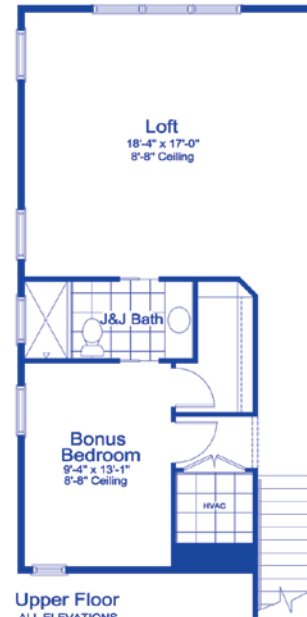

I-1 BONUS

C-1 BONUS


Upper Floor
ALL ELEVATIONS
Upper Floor w/ 2nd Master Bedroom Opt



Upper Floor
ALL ELEVATIONS
Upper Floor Bonus Room
w/ Bonus Bath Opt



Upper Floor
ALL ELEVATIONS
Upper Floor w/ Loft, Bonus Bedroom
& Jack and Jill Bath Opt

**ELEVATIONS
I-1 & C-1
WITH UPSTAIRS
BONUS ROOM**

Living	2332 SF
Garage	445 SF
Lanai	228 SF
Entry	30 SF
TOTAL	3035 SF
Opt Bonus	687 SF
TOTAL	3722 SF



1st Floor when Bonus Room Opt selected
(hatched area represents area changed when adding opt bonus room)

*Site conditions may vary. Please see sales representative for details regarding elevations and plan variations



Where You Live Matters

- 50 years of building award-winning homes
- Over 90 successful communities and over 19,000 homes built
- Dedicated customer care team
- Personalized Neal Design Gallery selection session
- 10 year full structural warranty
- 1, 6 and 11 month warranty service inspections available
- 2 year mechanical warranty
- Highest customer care satisfaction rating

Neighborhood Features

- Recreation center with a fitness center, pool and spa, children's playground, picnic shelter with grills, basketball court, two dog parks and walking trails
- Beautifully landscaped entry and streets
- The proven quality, service and integrity of Neal Communities

Award-Winning Design Features

- Choice of custom-designed Coastal and Island elevations
- Decorative architectural details and shutters per plan
- Designer -selected exterior color palettes
- Professional in-house design service
- Exterior textured wall finish with siding and accents per plan

Luxury Features

- Orange peel walls with knock-down ceiling texture
- Classic colonial moldings
- 5-1/4" colonial baseboards
- Colonial windows in select locations
- Decorative yard light
- Corian window sills per plan
- Stylish lever door hardware
- Classic archtop 2-panel interior doors
- Professionally landscaped home site including mulch
- Automatic irrigation system (front yard only)
- Spacious closets with ventilated shelving per plan
- Plush, stain-resistant wall-to-wall carpeting in designer colors in areas per plan
- Long-lasting 17" ceramic tile floors in foyer, kitchen, baths and utility
- Air-conditioned laundry area with washer/dryer connections
- Spraycrete top-coat finish at entry and lanai

Quality Kitchen Features

- General Electric stainless steel appliance package:
 - 5-year General Electric warranty (disposal not included)
 - Over-the-range microwave
 - Gas range
 - Dishwasher
 - 1/2 HP disposal
- 36" upper full-overlay melamine flat-panel cabinets with stylish hardware
- Cabinet crown molding and bumped cabinet at microwave
- Granite countertops - choice of value colors
- Stainless steel undermount sink
- Chrome single-handle faucet
- Spacious pantry for additional storage per plan

Luxury Bath Features

- Corian white countertops with integral sinks and eased edge in baths
- Ceramic tile walls and glass shower enclosure in master bath per plan
- Elongated white water closet
- Full-overlay melamine flat-panel cabinets with stylish hardware

- Privacy water closet in master bath per plan
- Full-width vanity mirrors
- Chrome single lever faucets
- Water resistant drywall in all wet areas
- Towel bars and paper holders per plan
- Designer vanity lights
- White tub in guest bath
- Deco mirrored medicine cabinets per plan
- Outside vented exhaust fans in all baths

Quality Construction Features

- Professionally-engineered structural components
- Concrete block construction
- Maintenance-free soffit and fascia
- Two conveniently located exterior hose bibs
- Steel storm panels per plan
- CPVC or PEX water lines throughout
- Roof with architectural shingles
- Five-year exterior paint warranty
- Raised-panel overhead garage door with operator and remote controls, style per elevation

SMART HOME PACKAGE

- Smart thermostat with Z-wave technology
- Smart entry door deadbolt with Z-wave technology
- Connected HD video doorbell
- Smart hub to connect Z-wave devices
- Structured wiring system including Cat6 phone/data or RG6 cable outlet (choice of five locations)
- One wireless access point prewire



Energy Saving Features

- Vinyl windows with Low-E glass
- Aluminum sliding glass doors
- Natural gas piping per plan
- R-38 ceiling insulation
- Premium fiberglass insulated entry door with weather stripping
- Energy-efficient air conditioning system (SEER rating varies per plan)
- Insulated heating and cooling ductwork
- All air conditioning ductwork 3rd party tested by a Class 1 Energy Rater - certified to be substantially leak free
- 50 gallon gas water heater and electric heat pump per plan
- Energy efficient lighting per plan

Quality Electric Features

- Decora light switches throughout
- Decorator light fixture in foyer
- All copper wiring from panel box
- Hardwired smoke detectors with battery backup
- Prewired for ceiling fans - choice of three locations
- GFI safety outlets in all wet areas
- GFI exterior outlets per plan

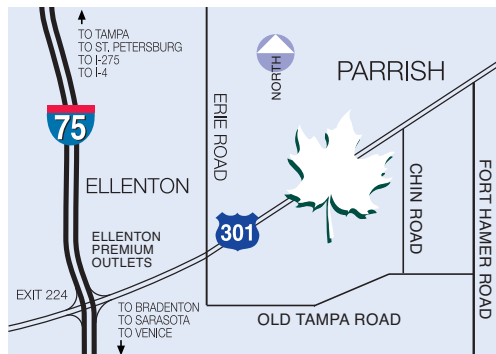


Silverleaf is an amenity-rich community surrounded by beautiful oak trees. Outstanding features include a recreation center with a fitness center, pool and spa, a children's playground, picnic shelter with grills, basketball court, two dog parks and walking trails.



CELEBRATION SERIES

CRUISE SERIES



10620 FALLING LEAF COURT, PARRISH, FLORIDA 34219 / 888.333.9162



2015 Professional Builder
BUILDER OF THE YEAR